




MARSHALLWHITE

T01/159 Beach Street
Port Melbourne



Sensational Bayside Style

Commanding wonderful outlooks from the bay to the city, this stunning apartment's stylish dimensions deliver immeasurable lifestyle appeal near the beach, Station Pier, Bay St and light rail to the city. Recently renovated to a high standard with timber floors that flow through the entrance hall to a sun-lit and spacious living/dining area with a gourmet granite kitchen opening to a covered balcony offering city views and terrace enjoying bay views. Also opening to a balcony, the main bedroom with stylish ensuite and built in robe is accompanied by a second double bedroom and designer bathroom. Includes lift access, security intercom, Euro-laundry, basement garage and over car storage box.

.t01-159beachstreet-portmelbourne.com

2 2 1

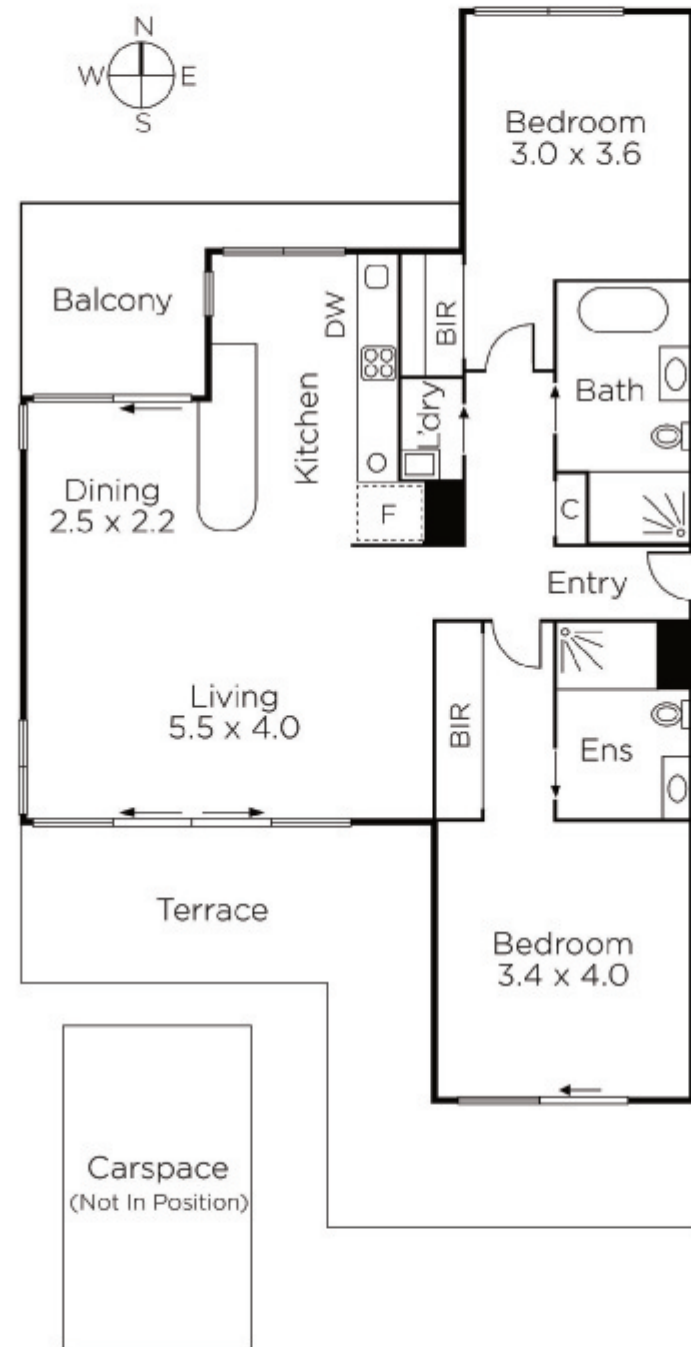
Auction Saturday 17th June at 11.30am

Justin Holod 0411 669 161

Nicholas Beks 0417 511 548

101 Dundas Place Albert Park
marshallwhite.com.au


MARSHALLWHITE



Disclaimer: Information provided is believed to be accurate as at the date of printing, no responsibility is taken for any errors or omissions. It is your responsibility to obtain independent, professional advice. Personal information collected from you is for security purposes and to contact you should the property sell prior to auction. We may use this information to provide you with other real estate services including referrals to authorised financial services' providers. Visit our website at www.marshallwhite.com.au for our privacy policy.