



MARSHALLWHITE
ONE

G16/1011 Toorak Road
Camberwell



'Jenin': Vast, North-Facing, Designer Apartment

So peacefully removed from the road and so impressively sized, with incredible north-facing outdoor living, this state-of-the-art, single bedroom apartment is a wonderful surprise in the highly-regarded 'Jenin' building. Stone benches, a SMEG oven and concealed dish-drawer combine to form a superior low-profile, galley-style kitchen as open-plan living flows through two sets of double-glazed sliding doors to a capacious, north-facing, wrap-around courtyard. Efficiently designed, the home is securely accessed via video entry and features large robes in the bedroom, reverse cycle air conditioning, premium block out blinds, a European laundry and the highly-coveted prize of secure basement parking with storage. Incredibly well-served for shopping destinations, near everything at Camberwell Junction, Hartwell Village and Tooronga Village, as well as Burke Rd trams, Hartwell Railway Station, Riversdale Rd trams and the M1 Freeway.

g16-1011toorakroad-camberwell.com



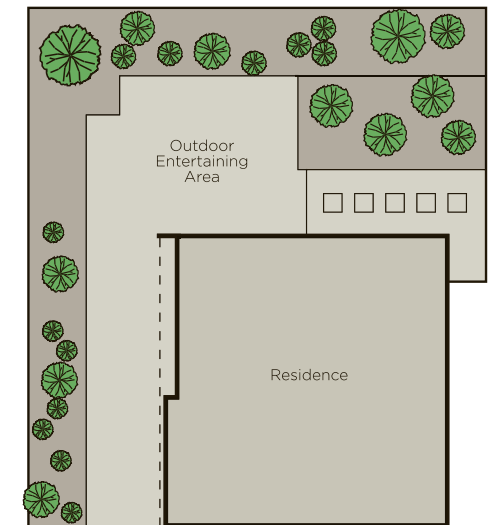
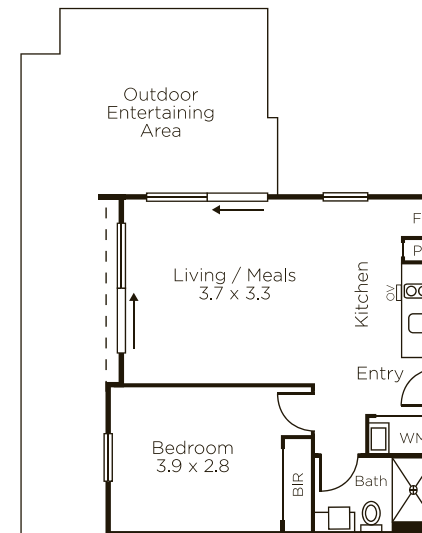
Private Sale

Kane Penhalluriack 0406 556 445

Danny See 0402 533 853

801 Glenferrie Road Hawthorn

9822 9999 mwone.com.au




MARSHALLWHITE
ONE

Disclaimer: Information provided is believed to be accurate as at the date of printing, no responsibility is taken for any errors or omissions. It is your responsibility to obtain independent, professional advice. Personal information collected from you is for security purposes to contact you should the property sell prior to auction. We may use this information to provide you with other real estate services including referrals to authorized financial services providers. Visit our website at www.mwone.com.au for our privacy policy.