



THE HUB

  
MARSHALLWHITE  
ONE

G04/8 Garfield Street  
Richmond



## ‘The Hub’: Sophisticated Urban Oasis

Like a lavish oasis, this large, one bedroom, ground-floor apartment introduces a sleek and sophisticated design edge to the gritty inner urban authenticity of the streets between Bridge Rd and Victoria St. Highly secure and tucked-away amidst a lush garden outlook, this first class home is part of the cutting edge ‘The Hub’ apartments and promises the ultimate inner-city lifestyle. With stone benches, state-of-the-art integrated appliances and tiled splash back, the open-plan kitchen / meals / living is superb as it opens to a generous and sheltered paved courtyard. Also offering intercom entry, the home features basement parking with convenient elevator access and a storage cage, as well as a beautiful subway-tiled bathroom / laundry and robes in the bedroom. This unbeatable and dynamic position is within walking distance of first class strip shopping, cafes, restaurants and nightlife as well as the city, beautiful parkland and plenty of public transport.

G04-8garfieldstreet-richmond.com

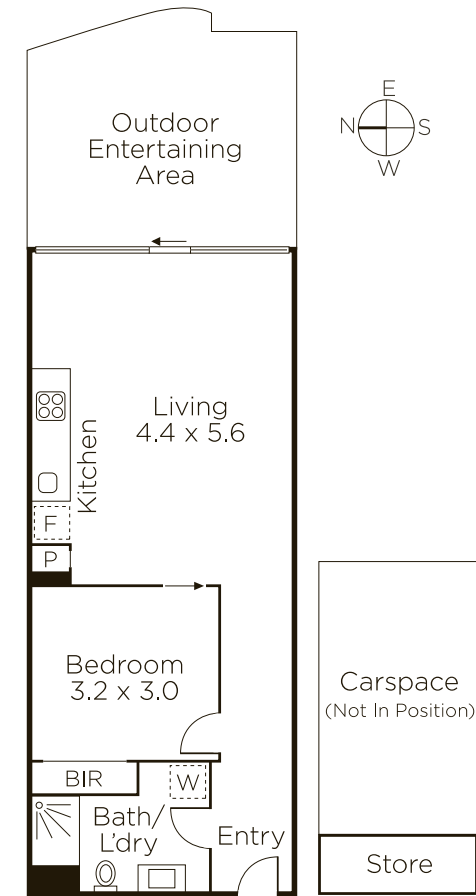
1 1 1

### Private Sale

Bethany Wilkinson 0449 285 813  
Jack Moss 0439 378 954

801 Glenferrie Road Hawthorn  
9822 9999 mwone.com.au

MARSHALLWHITE  
ONE



Disclaimer: Information provided is believed to be accurate as at the date of printing, no responsibility is taken for any errors or omissions. It is your responsibility to obtain independent, professional advice. Personal information collected from you is for security purposes to contact you should the property sell prior to auction. We may use this information to provide you with other real estate services including referrals to authorized financial services providers. Visit our website at [www.mwone.com.au](http://www.mwone.com.au) for our privacy policy.