



MARSHALLWHITE  
ONE

G01/55 Wellington Street  
St Kilda



## 'Holly:' Brand New and Absolutely Flawless

Contemporary brilliance, superior design and peaceful, leafy outlets are combined with a captivating sense of inner-city sophistication in this brand new, two bedroom apartment that has spared no expense. Immediate appeal with atrium gardens, fully intergrated Gaggenau appliances within a kitchen that highlights vast stone benches and premium cabinetry, with the open-plan living opening to a broad entertainers' balcony with quiet, leafy views. A huge master suite with a vogue ensuite, alcove study and walk-in robe, with built in robes in the second bedroom. Includes central ducted heating and cooling, secure video entry, two coveted basement parking spaces, a storage room and double glazing to preserve a remarkable sense of sanctuary. The allure of this cosmopolitan location includes cafes, shopping strips, restaurants and bars as well as all modes of public transport.

[g01-55wellingtonstreet-stkilda.com](http://g01-55wellingtonstreet-stkilda.com)

2 2 2

Auction Saturday 12th May at 2.30pm

Bradley Steinbach 0403 539 038

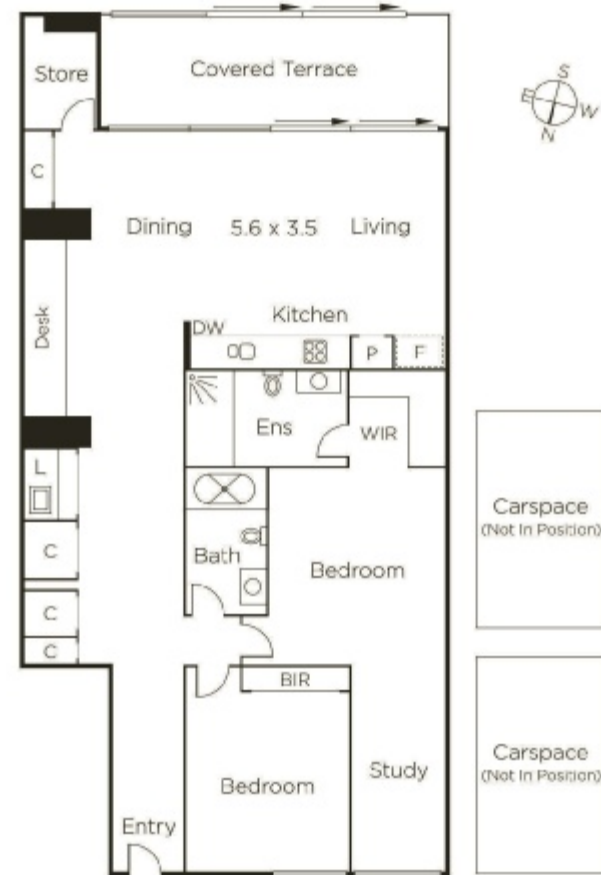
Oliver Bruce 0409 856 599

Jaymee Ntentis 0478 724 222

101 Dundas Place Albert Park

9822 9999 [mwone.com.au](http://mwone.com.au)

  
MARSHALLWHITE  
ONE



Disclaimer: Information provided is believed to be accurate as at the date of printing, no responsibility is taken for any errors or omissions. It is your responsibility to obtain independent, professional advice. Personal information collected from you is for security purposes to contact you should the property sell prior to auction. We may use this information to provide you with other real estate services including referrals to authorized financial services' providers. Visit our website at [www.mwone.com.au](http://www.mwone.com.au) for our privacy policy.