




MARSHALLWHITE
ONE

G01/2 Gascoyne Street
Canterbury



'The Canterbury:' Exclusive and Refined

Designed and crafted with a close attention to detail, this exclusive state-of-the-art home offers a superior lifestyle, in close proximity to Camberwell Junction. With an emphasis on luxury, 'The Canterbury', a prestigious Rothe Lowman design offers secure video entry with automatic doors and basement parking with lift access. The home itself hosts floor to ceiling windows, Miele kitchen appliances, marble benches and splash backs as well as soft close cabinetry. Generously proportioned open-plan living flows seamlessly to an expansive private courtyard suited for entertaining, whilst the semi-ensuite bathroom is stylishly themed with marble. Features include huge robes in the bedroom, Oak floorboards, Euro laundry, ducted heating/cooling, a storage cage and a communal BBQ courtyard. Walk to cafes, restaurants, shopping and cinemas, this outstanding location also offers easy access to trams, trains and attractive local parks.

g01-2gascoynestreet-canterbury.com

1 1 1

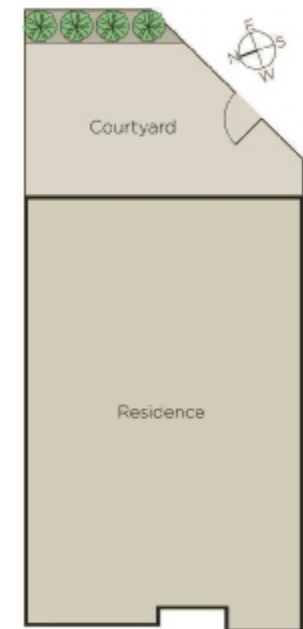
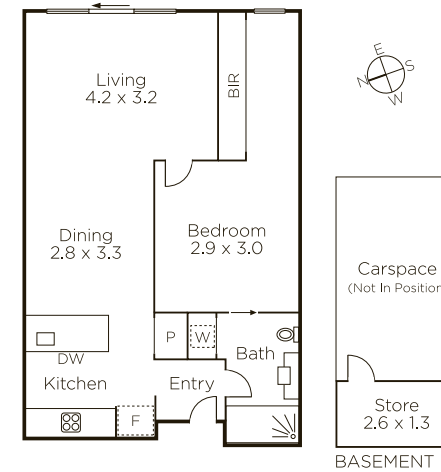
Auction Saturday 12th May at 10am

Danny See 0402 533 853

Ash Sachdev 0402 425 661

801 Glenferrie Road Hawthorn

9822 9999 mwone.com.au




MARSHALLWHITE
ONE

Disclaimer: Information provided is believed to be accurate as at the date of printing, no responsibility is taken for any errors or omissions. It is your responsibility to obtain independent, professional advice. Personal information collected from you is for security purposes to contact you should the property sell prior to auction. We may use this information to provide you with other real estate services including referrals to authorized financial services' providers. Visit our website at www.mwone.com.au for our privacy policy.