



MARSHALLWHITE

9A Carrington Grove
Brighton East



Elegant "Iolene" for Easy Living

A cul de sac address and timeless design await in this Atkinson and Pontifex-built townhouse near shops and schools. Three-bedroom and study hideaway has two living areas leading from the double-height entry foyer and a true sense of privacy. Thoughtful attention to detail shows in the kitchen, where you'll appreciate the Ilve range with teppanyaki plate and 90cm oven. An entire floor of bedrooms and bathrooms has tranquil views, and the main bedroom features a double-shower ensuite. Effortless living continues outside, where the courtyard garden features a barbecue, artificial turf and remote-control awning.

3 2 2

Auction Saturday 15th December at 10.30am

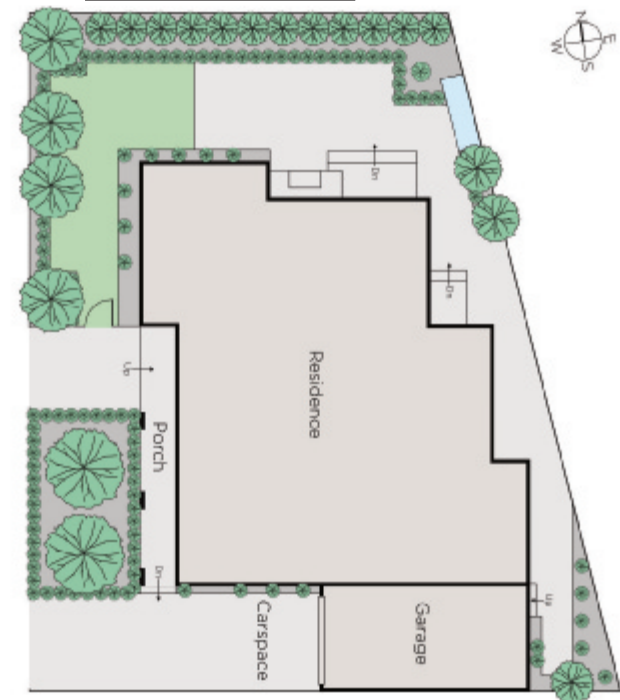
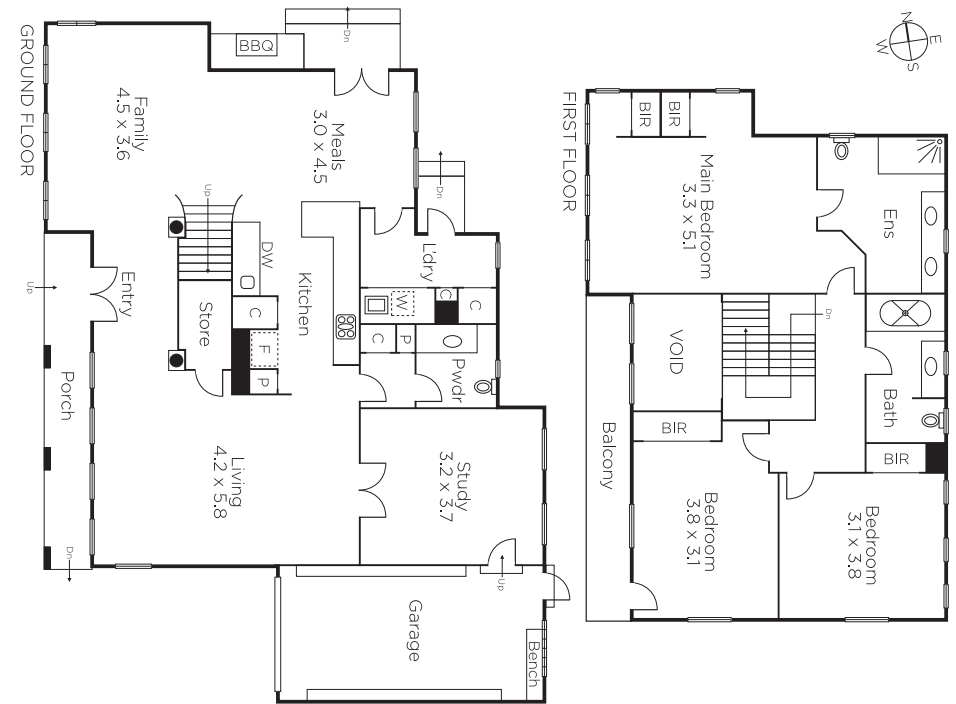
Barb Gregory
0419 568 370

Kaine Lanyon
0411 875 478

Alyce Fleming
0499 082 614


MARSHALLWHITE

225 Bay Street, Brighton



Disclaimer: Information provided is believed to be accurate as at the date of printing, no responsibility is taken for any errors or omissions. It is your responsibility to obtain independent, professional advice. Personal information collected from you is for security purposes and to contact you should the property sell prior to auction. We may use this information to provide you with other real estate services including referrals to authorised financial services providers. Visit our website at www.marshallwhite.com.au for our privacy policy.