



MARSHALLWHITE
ONE

957 Riversdale Road
Surrey Hills



Beautifully Renovated, Family-Sized Home

Superbly renovated from top-to-bottom, this memorable, three bedroom, family-sized residence is a delightful designer home with a lavish alfresco flow in a family-friendly location of the ultimate convenience. Equipped with the finest European appliances, stone benches and superior soft-close cabinetry, the open-plan kitchen / meals / living flows effortlessly to a north-facing and undercover entertainers' deck, whilst the lounge room is semi-attached with capacity to be zoned-off as needed. Surrounded by an attractive yet low maintenance garden, the home also offers a master bedroom with walk-in-ropes and an ensuite and the convenience of a double lock-up garage as well as ducted heating and reverse cycle conditioning. Terrific location just a short walk from cafes and shops at the Through Rd Shopping Village, with transport at your doorstep, Wattle Park around the corner and Camberwell Junction just down the road.

957riversdaleroad-surreyhills.com

3 2 2

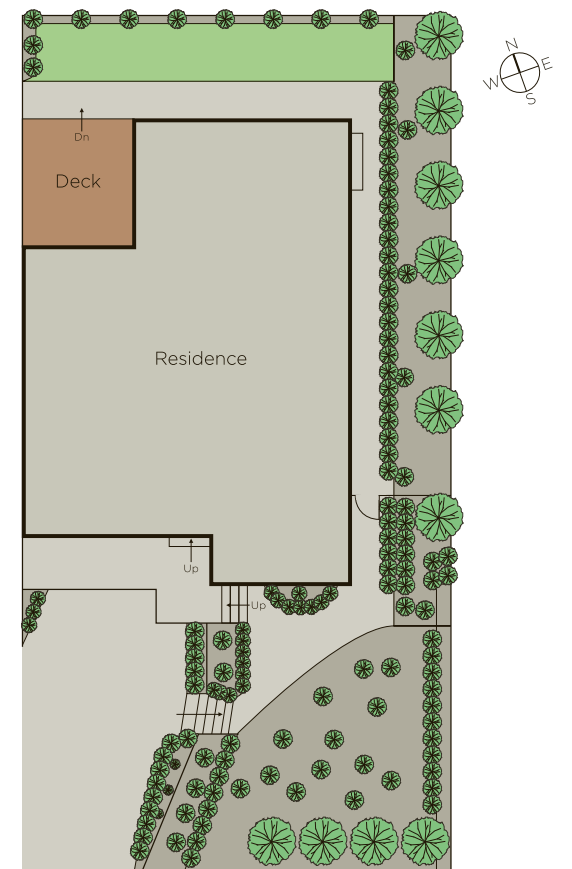
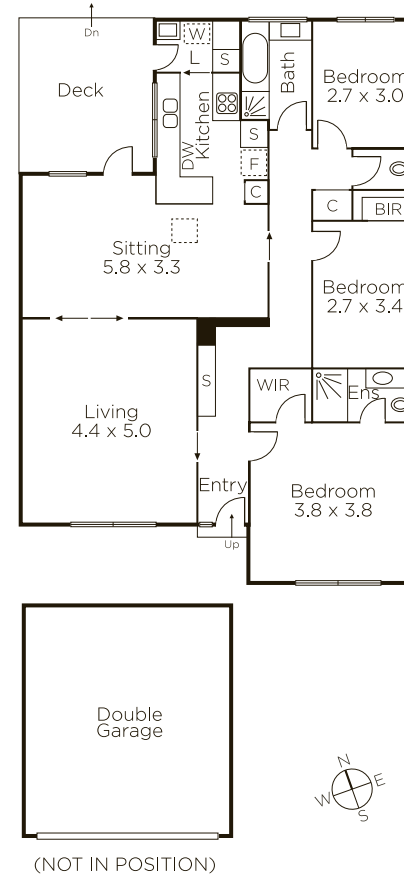
Auction Saturday 2nd September at 10.30am

Danny See 0402 533 853

801 Glenferrie Road Hawthorn

Tori McGregor 0400 633 992

9822 9999 mwone.com.au



MARSHALLWHITE
ONE

Disclaimer: Information provided is believed to be accurate as at the date of printing, no responsibility is taken for any errors or omissions. It is your responsibility to obtain independent, professional advice. Personal information collected from you is for security purposes to contact you should the property sell prior to auction. We may use this information to provide you with other real estate services including referrals to authorized financial services' providers. Visit our website at www.mwone.com.au for our privacy policy.