



3.13m

39.6m

770sqm
(approx.)

51.75m

36.57m


MARSHALLWHITE

95 Union Street
Brighton East



Big Frontage and a Prized Corner Address

The perfect location for creating new luxury is in the heart of the Gardenvale Primary School zone and metres from transport. This is where a grand plan can take shape STCA, with a huge 36.5-metre approx frontage and north-facing land of 770 square metres approx. Imagine creating a statement home, or two homes STCA, in such a sought-after neighborhood, loved by families for its parks, one of Bayside's most in-demand schools, local cafes and easy access to Bay Street. Build here and you can be footsteps from Little Brighton Reserve, around the corner from Landcox Park and trams, and a stroll away from Hurlingham Park.

3 1 2

Auction Saturday 13th October at 10.30am

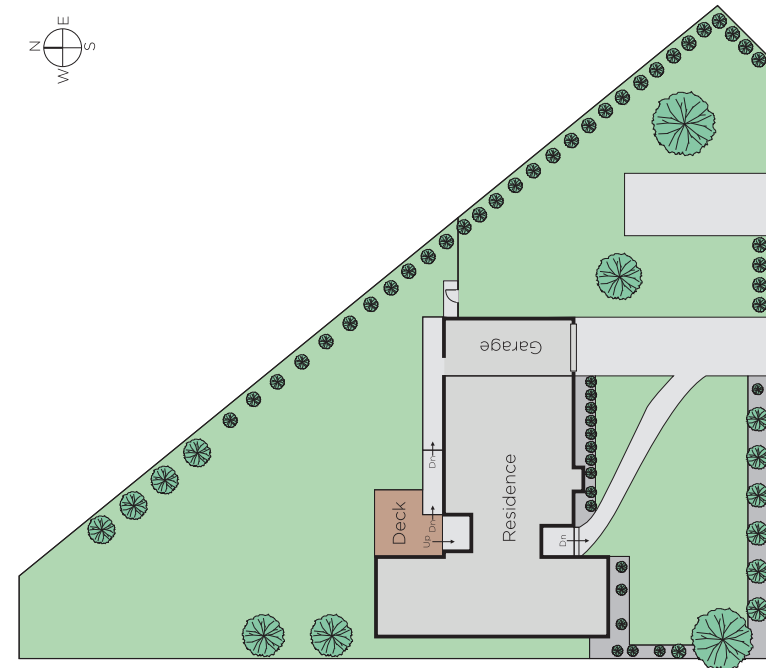
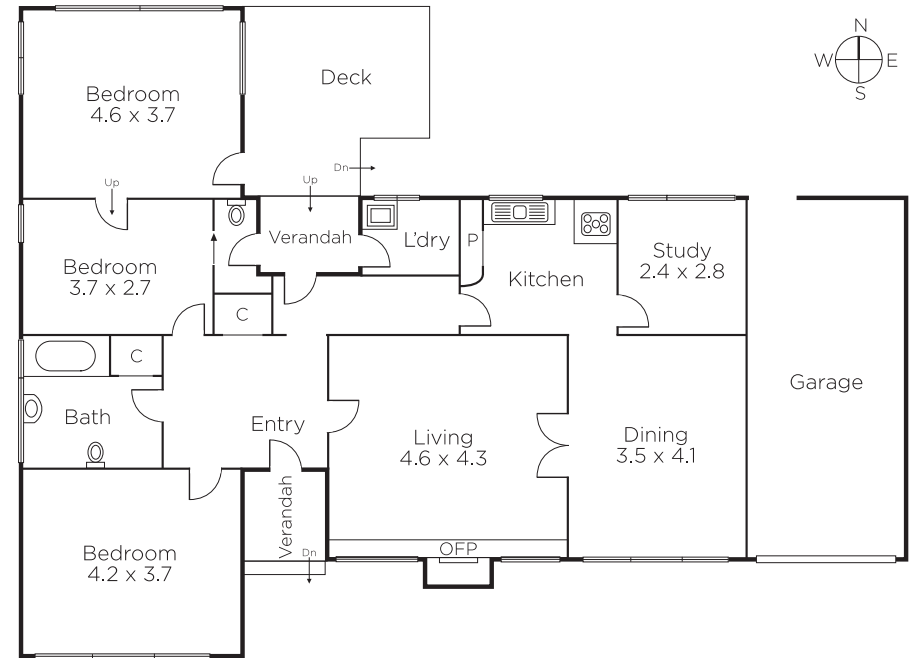
Robin Parker
0409 336 282

Kate Fowler
0418 418 385

Kylie Block
0439 755 588


MARSHALLWHITE

225 Bay Street, Brighton



Disclaimer: Information provided is believed to be accurate as at the date of printing, no responsibility is taken for any errors or omissions. It is your responsibility to obtain independent, professional advice. Personal information collected from you is for security purposes and to contact you should the property sell prior to auction. We may use this information to provide you with other real estate services including referrals to authorised financial services providers. Visit our website at www.marshallwhite.com.au for our privacy policy.