




MARSHALLWHITE

91 Kerferd Road
Albert Park



The Quintessential Family Home

Set on one of Albert Park's most beautiful tree-lined boulevards, this distinctive family home provides substantial family-oriented accommodation on 505sqm approx. Living zones include formal sitting, first-floor living and a quite spectacular open-plan family room. Floor-to-ceiling windows highlight living and dining spaces, well-equipped study and a comprehensive cook's kitchen. A total of six generous bedrooms share two luxurious bathrooms, the sixth bedroom doubling as a home office/retreat with micro terrace and CBD views. Includes tectonic flooring, laundry, carport, double garage and second street frontage.

91kerferdroad-albertpark.com

5 2 3

Auction Saturday 27th May at 1.30pm

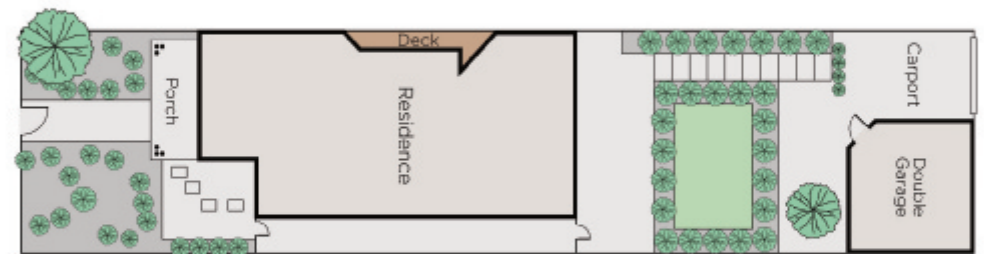
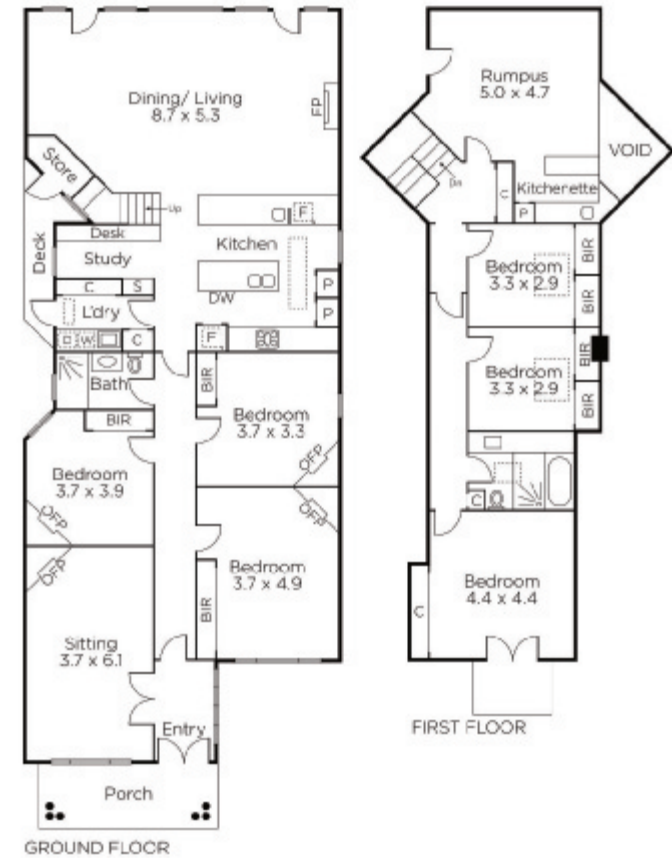
Michael Paproth 0488 300 800

Adrian Wood 0404 861 508

Brendan Coburn 0433 262 876

101 Dundas Place Albert Park
marshallwhite.com.au


MARSHALLWHITE



Disclaimer: Information provided is believed to be accurate as at the date of printing, no responsibility is taken for any errors or omissions. It is your responsibility to obtain independent, professional advice. Personal information collected from you is for security purposes and to contact you should the property sell prior to auction. We may use this information to provide you with other real estate services including referrals to authorised financial services' providers. Visit our website at www.marshallwhite.com.au for our privacy policy.