



MARSHALLWHITE

91 Bank Street
South Melbourne



City Edge Style and Serenity

Behind the classic façade of this Victorian residence, period elegance, contemporary style and a versatile floor-plan create an inviting inner bayside environment walking distance to the market, trams, Albert Park Lake and Clarendon St. Dark timber floors add a contemporary touch to the arched hall, generous living room with open fire, superbly appointed modern Ilve kitchen and light-filled dining room opening to a private courtyard. Two double bedrooms and stylish bathroom are downstairs while the main bedroom with robe and chic en-suite are above.

3 2

Auction Saturday 10th November at 10.30am

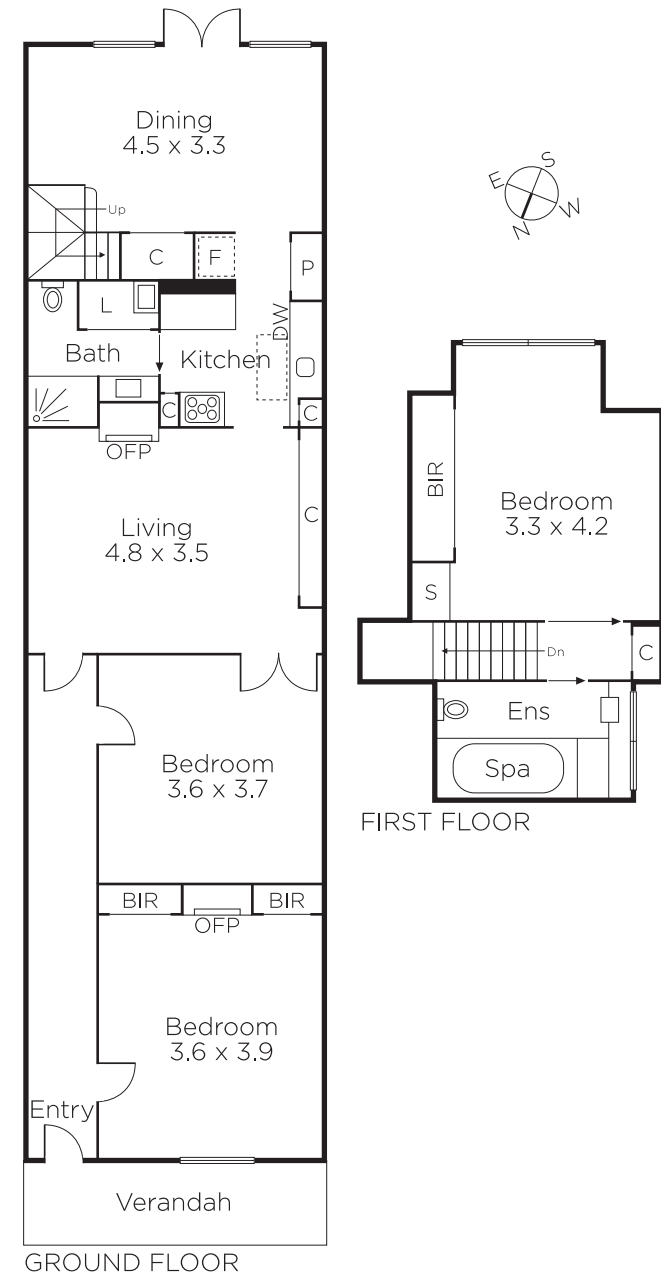
Sarah Wood
0408 902 827

Oliver Bruce
0409 856 599

Matthew Grima
0403 438 601


MARSHALLWHITE

101 Dundas Place, Albert Park



Disclaimer: Information provided is believed to be accurate as at the date of printing, no responsibility is taken for any errors or omissions. It is your responsibility to obtain independent, professional advice. Personal information collected from you is for security purposes and to contact you should the property sell prior to auction. We may use this information to provide you with other real estate services including referrals to authorised financial services providers. Visit our website at www.marshallwhite.com.au for our privacy policy.