



905 Robinsons Road  
Pearcedale



Comfortable family living, semi-rural lifestyle!

**buxton**

# 905 Robyns Road Pearcedale



3 2 2

Immaculate 3-bedroom family home with 9706m<sup>2</sup> (approx.) of enviable green space to call your own - superbly located on the edge of the iconic Mornington Peninsula. Feat. expansive open-plan living, country timber kitchen (stainless steel appliances), en-suited master bedroom, a/c, space heater plus massive 24m x 7m (approx.) shed. Ideally positioned minutes to Pearcedale Village, Pearcedale Primary School, bus services plus easy access to Melbourne CBD. Located a short drive to Frankston’s retail hub, restaurants, train & beaches.

### Private Sale

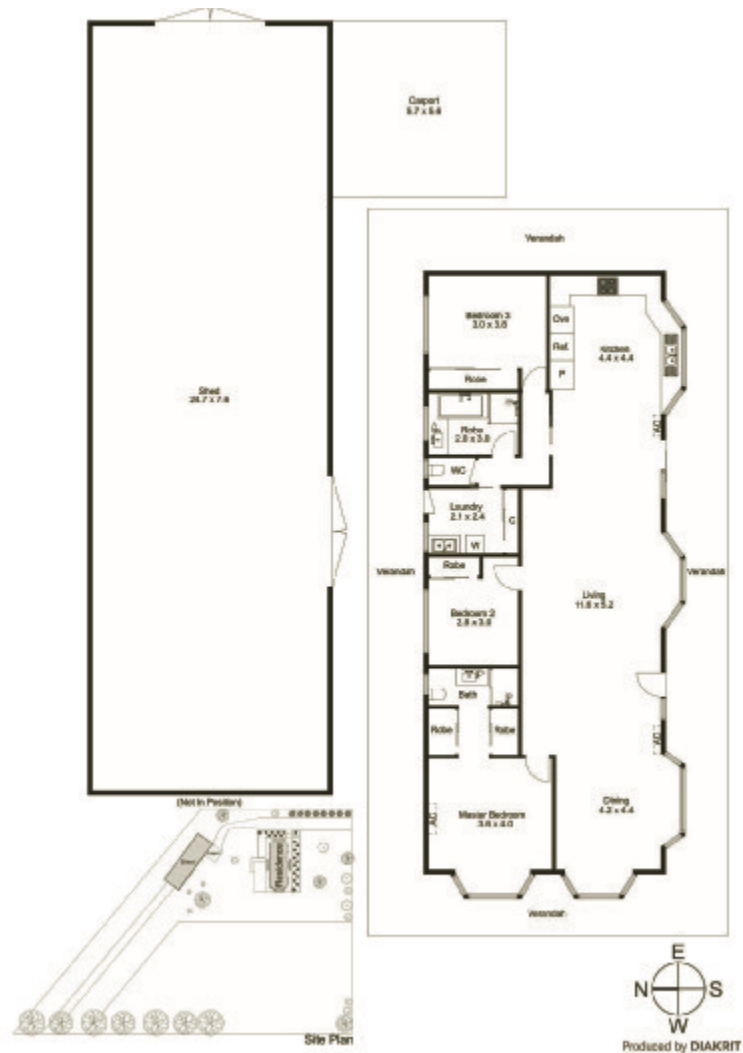
#### Contact

James French 0434 955 657

[jfrench@buxton.com.au](mailto:jfrench@buxton.com.au)

Noel Susay 0450 069 506

[nsusay@buxton.com.au](mailto:nsusay@buxton.com.au)



We have obtained all information in this document from sources we believe to be reliable; however, we cannot guarantee its accuracy. Prospective purchasers are advised to carry out their own investigations.

