




MARSHALLWHITE

90 River Street
South Yarra





Style Central

Classically Victorian outside yet entirely contemporary and stylish on the inside, this sensational inner urban domain delivers a coveted South Yarra lifestyle walking distance to the Yarra, the Como and Chapel St and Toorak Rd shops and restaurants.

Behind the period façade, sleek lines, timber floors and an abundance of natural light define the interior dimensions. High ceilings flow through the hall to a gourmet kitchen featuring Miele appliances and granite benches and a sensational living and dining room with open fireplace. Bi-fold doors open the living to a private northeast bluestone paved garden oasis shaded by a magnificent Canary Island Palm tree. A downstairs bedroom with stunning en-suite/bathroom and built in robe is matched upstairs by a second double bedroom with stylish en-suite and walk in robe and third bedroom or study. Superbly appointed with alarm, hydronic heating, laundry and basement double garage.

90riverstreet-southyarra.com

3  2  2 

Auction Saturday 28th October at 11.30am

Fraser Cahill 0400 592 572

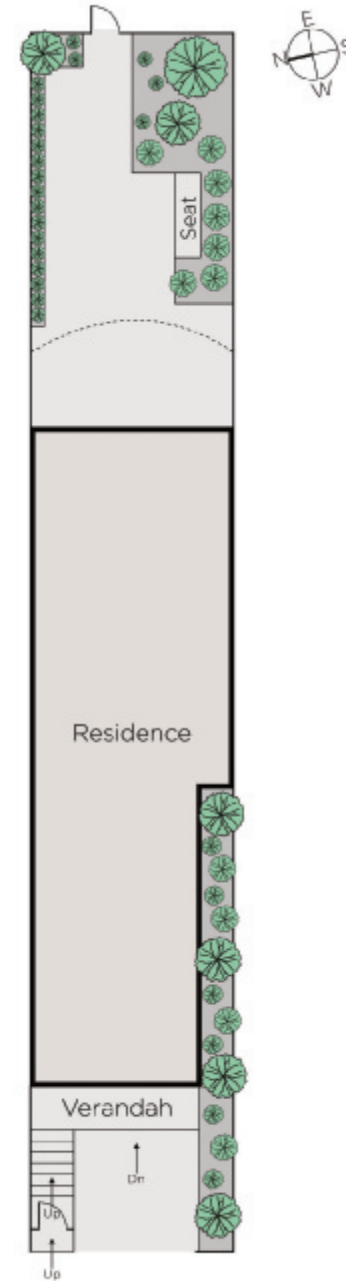
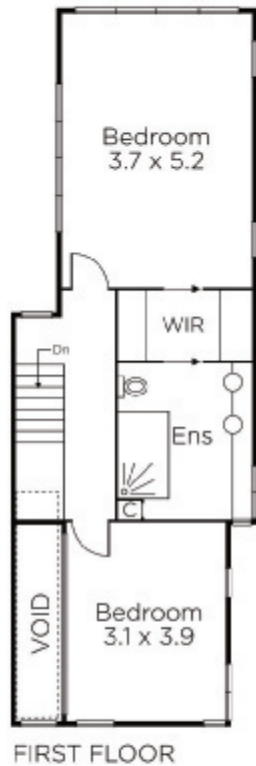
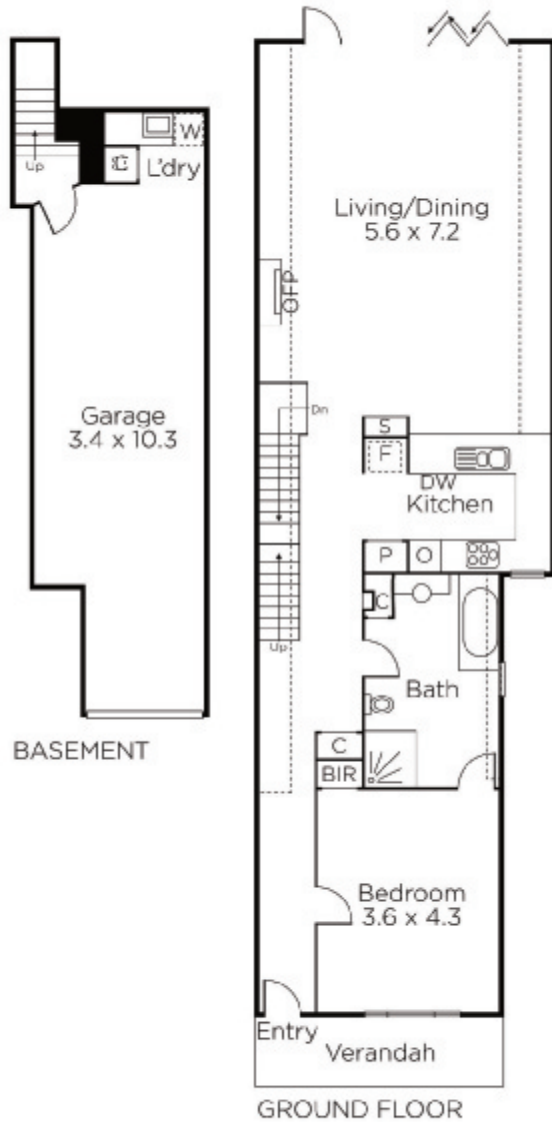
Nicole French 0417 571 505

Marcus Chiminello 0411 411 271

1111 High Street Armadale

marshallwhite.com.au


MARSHALLWHITE



Disclaimer: Information provided is believed to be accurate as at the date of printing, no responsibility is taken for any errors or omissions. It is your responsibility to obtain independent, professional advice. Personal information collected from you is for security purposes and to contact you should the property sell prior to auction. We may use this information to provide you with other real estate services including referrals to authorised financial services' providers. Visit our website at www.marshallwhite.com.au for our privacy policy.