



  
MARSHALLWHITE

9 Rubens Grove  
Canterbury





## Family Appeal in a Privileged Location

This generously proportioned Edwardian family residence c1910 in the prestigious Golden Mile precinct features classic period attributes plus scope to renovate/reconfigure the rear living areas which overlook a verandah and wide deck surrounding a pool (STCA). Set over 2-levels comprising a wide entrance hall, formal sitting room and adjacent dining, 5-bedrooms, three downstairs & two upstairs, one with a front balcony, two family bathrooms plus a country-style exposed brick and timber kitchen/meals equipped with a prestige Ilve S/S stove, F & P dishwasher and externally accessed laundry. Land: 868sqm approx.

9rubensgrove-canterbury.com

5 2 2

Auction Saturday 9th September at 12.30pm

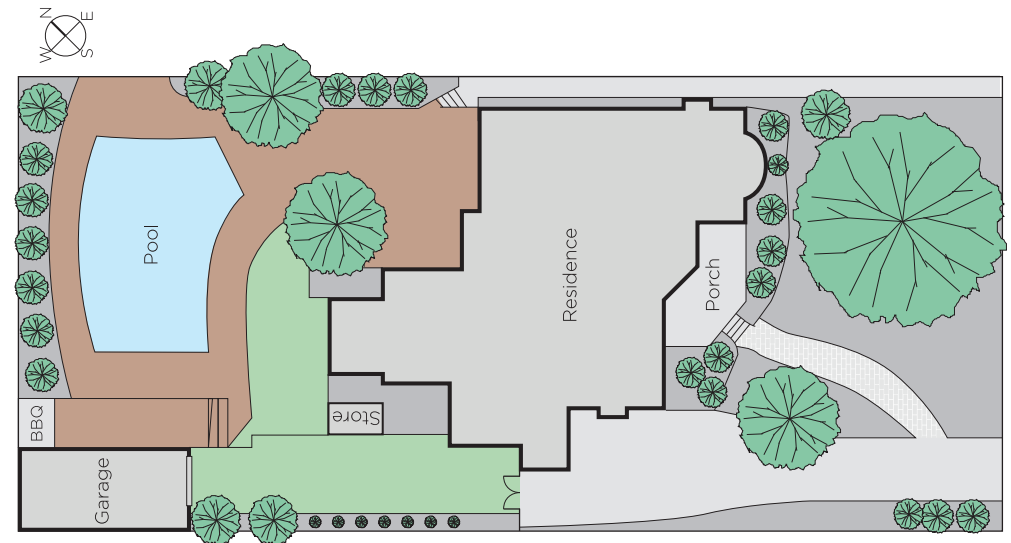
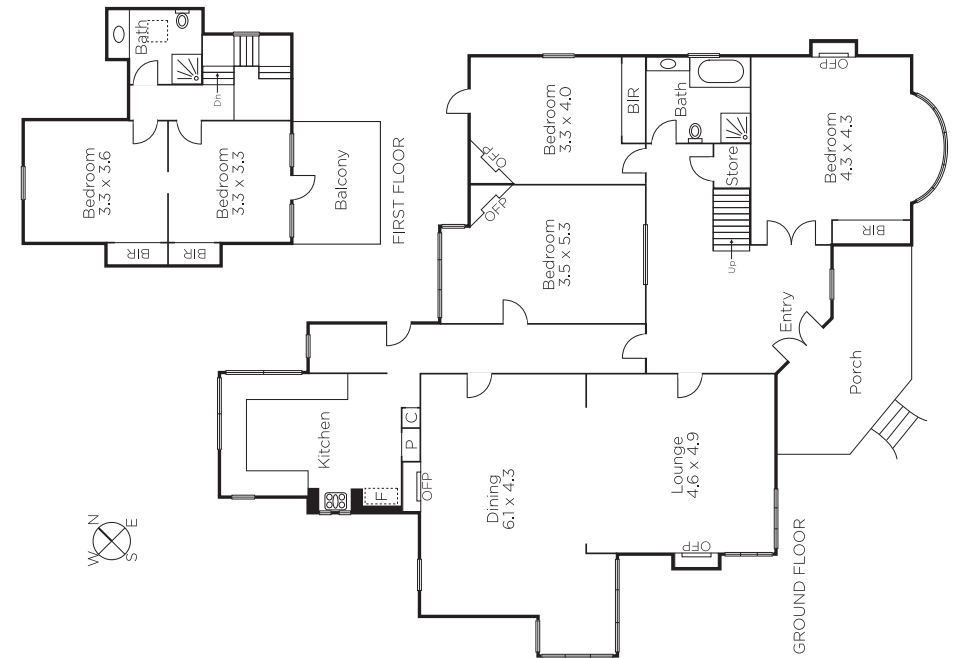
James Tostevin 0417 003 333

Andrew Gibbons 0407 577 007

Scarlett Hang 0405 054 888

801 Glenferrie Road Hawthorn  
marshallwhite.com.au

  
MARSHALLWHITE



Disclaimer: Information provided is believed to be accurate as at the date of printing, no responsibility is taken for any errors or omissions. It is your responsibility to obtain independent, professional advice. Personal information collected from you is for security purposes and to contact you should the property sell prior to auction. We may use this information to provide you with other real estate services including referrals to authorised financial services' providers. Visit our website at [www.marshallwhite.com.au](http://www.marshallwhite.com.au) for our privacy policy.