




MARSHALLWHITE

9 Moorhead Street
Camberwell



Family Delight with Flexible Future

This pretty Californian Bungalow has served one family for more than forty years; a fine testament to the area's consistent success! Attractively updated over time, its light filled proportions continue to provide appealing accommodation whilst also offering scope to renovate/extend or build a new home on 570sqm (approx.) STCA. From its charming proportions, walk to parkland, boutique cafes and Riversdale Road trams with Middle Camberwell shops, Camberwell Junction and leading schools easily reached. Features ducted heating/cooling, high ceilings, generous back yard with northern aspect.

9moorheadstreet-camberwell.com

3 2 2

Auction Saturday 16th December at 1.30pm

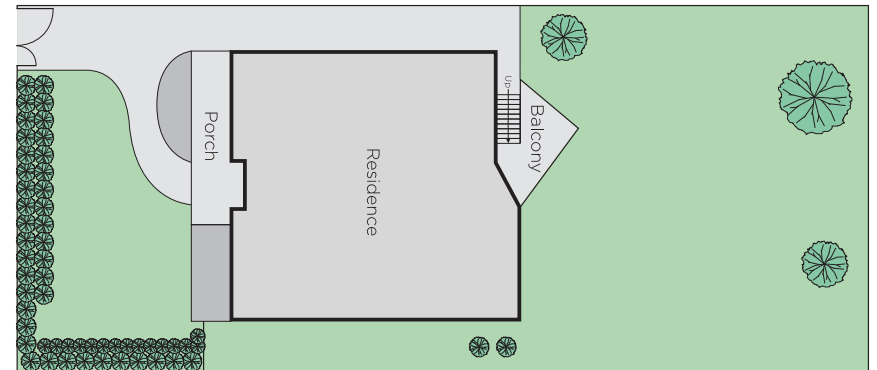
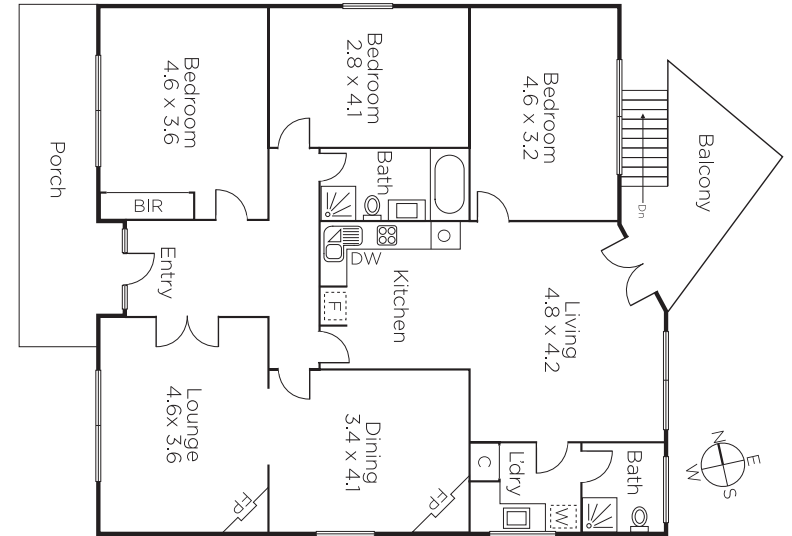
Cameron Edgoose
0438 064 212

Grayson Rayner
0433 654 744

Duane Wolowiec
0418 567 581


MARSHALLWHITE

801 Glenferrie Road, Hawthorn



Disclaimer: Information provided is believed to be accurate as at the date of printing, no responsibility is taken for any errors or omissions. It is your responsibility to obtain independent, professional advice. Personal information collected from you is for security purposes and to contact you should the property sell prior to auction. We may use this information to provide you with other real estate services including referrals to authorised financial services providers. Visit our website at www.marshallwhite.com.au for our privacy policy.