



MARSHALLWHITE

9 May Road
Toorak



Classic Elegance in Coveted Location

With all the hallmarks of Federation architecture & a northern orientation, this elegant c1905 residence is ideal to enjoy now while considering plans to update to your own design in a highly sought after location near Hawksburn Village and station. High ceilings are featured in the arched hall, formal dining/3rd bedroom, beautiful sitting room with open fire, 2 double bedrooms with open fires & built in robes & a bathroom. Bathed in northern light, the living/dining room with open fire & well-appointed kitchen opens to a private north garden. Includes powder-room, laundry, right of way and OSP. Land size: 300sqm (approx.)

3 1 1

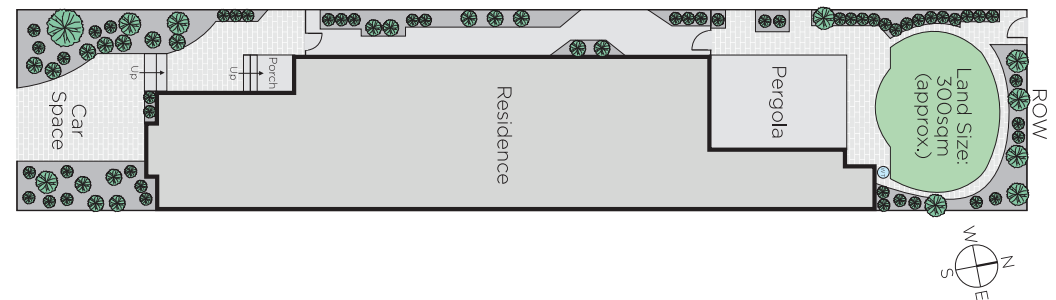
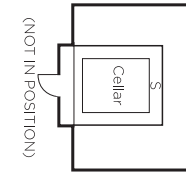
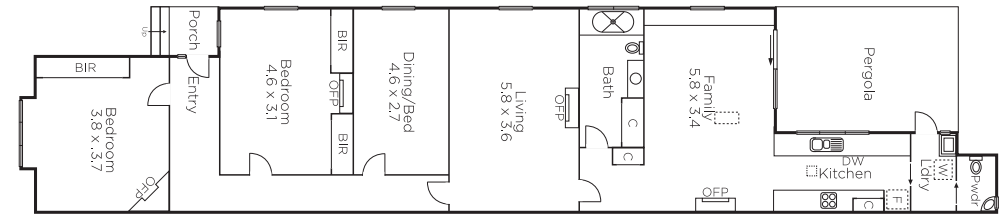
Auction Saturday 13th October at 10.30am

James McCormack
0410 503 389

Dean Gilbert
0418 994 939


MARSHALLWHITE

1111 High Street, Armadale



Disclaimer: Information provided is believed to be accurate as at the date of printing, no responsibility is taken for any errors or omissions. It is your responsibility to obtain independent, professional advice. Personal information collected from you is for security purposes and to contact you should the property sell prior to auction. We may use this information to provide you with other real estate services including referrals to authorised financial services providers. Visit our website at www.marshallwhite.com.au for our privacy policy.