



  
MARSHALLWHITE

9 Harts Parade  
Hawthorn East





## Classic Victorian with Sunny Entertaining Spaces

This classic Victorian residence features a Baltic Pine double arched hallway flowing to a light-filled family living and entertaining area with its preferred northern rear aspect overlooking a wide sun-drenched deck and deep, leafy garden with solar heated pool. The zoned accommodation over 2-levels delivers a formal sitting room with OFP, 5-bedrooms, two downstairs, main with WIR/ensuite, two pristine family bathrooms, upstairs retreat and a separate laundry. Plus an expansive family room with study alcove incorporating a sleek S/S kitchen with a prestige Ilve stove and Miele dishwasher.

4 3

Auction Saturday 11th August at 1.30pm

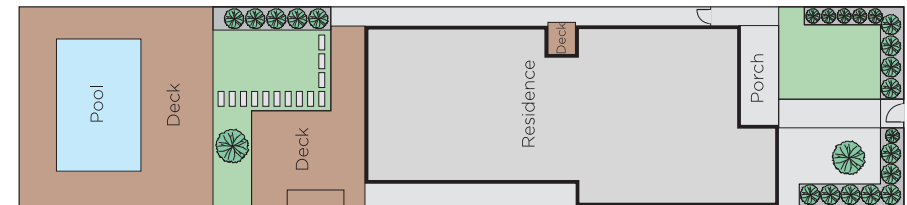
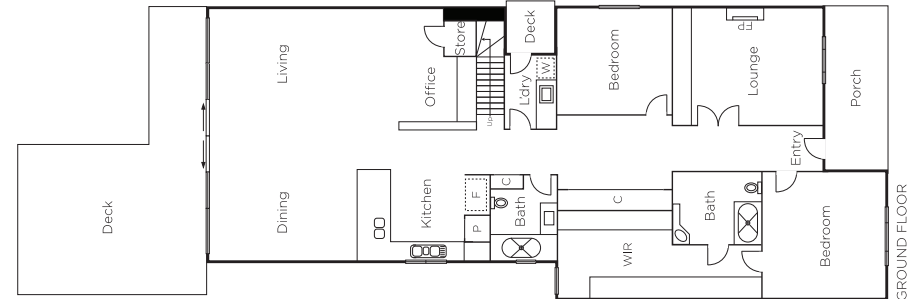
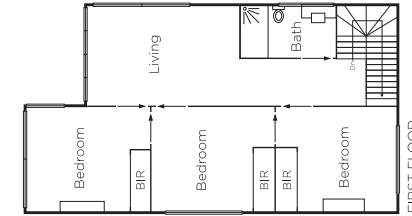
**Chris Barrett**  
0412 927 409

**James Tostevin**  
0417 003 333

**Charlie Tostevin**  
0431 713 205

  
**MARSHALLWHITE**

801 Glenferrie Road, Hawthorn



Disclaimer: Information provided is believed to be accurate as at the date of printing, no responsibility is taken for any errors or omissions. It is your responsibility to obtain independent, professional advice. Personal information collected from you is for security purposes and to contact you should the property sell prior to auction. We may use this information to provide you with other real estate services including referrals to authorised financial services providers. Visit our website at [www.marshallwhite.com.au](http://www.marshallwhite.com.au) for our privacy policy.