




MARSHALLWHITE

9 Gurner Street
St Kilda



Unrivalled Character and Style on St Kilda Hill

Stylishly combining Federation era character with a substantial contemporary renovation in coveted St Kilda. The significant proportions of this brick family home are immediately apparent with 4 large bedrooms (main with ensuite & WIR), front sitting room/home office offering sep access, gourmet kitchen with Gaggenau/Miele appliances, huge light-filled family and dining area adjacent to an entertainer's deck and off-street parking for two cars. Also features 12ft ceilings, an abundance of storage and sep laundry. Proudly positioned within walking distance to St Kilda's best attractions. Land Size: 430sqm (approx).

4 2 2

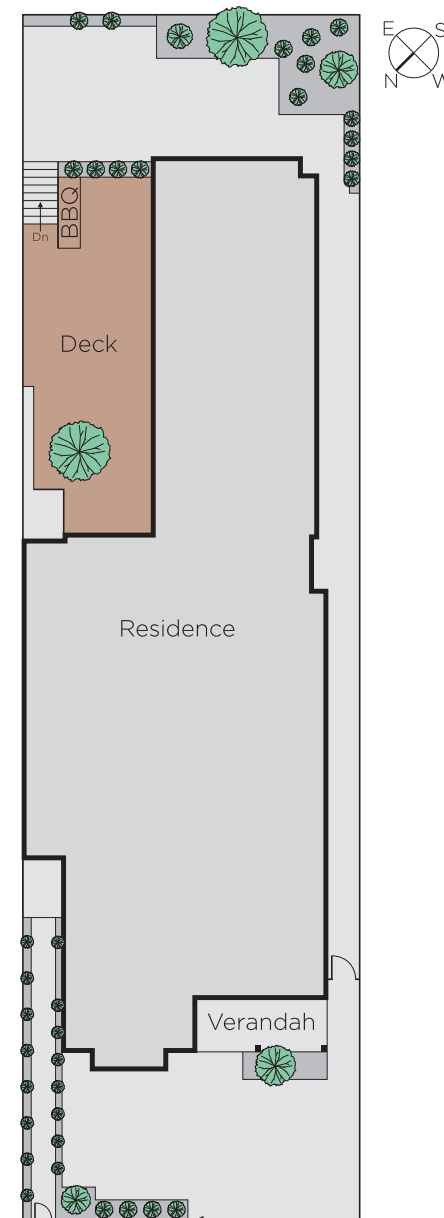
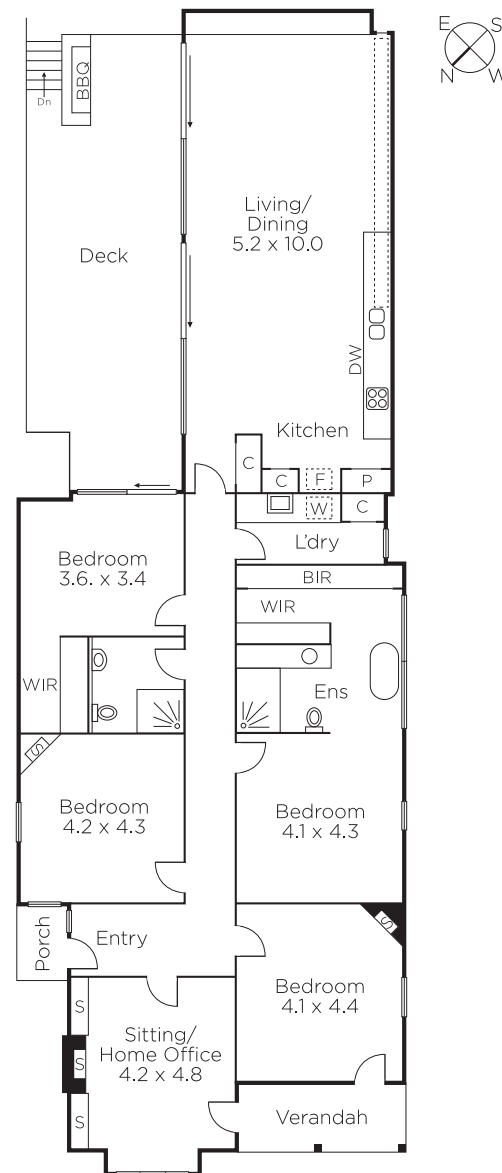
Expressions of Interest Close Wednesday 28th November at 5pm

Sam Hobbs
0404 164 444

Dan McGuire
0411 514 103

MARSHALLWHITE

225 Bay Street, Brighton



Disclaimer: Information provided is believed to be accurate as at the date of printing, no responsibility is taken for any errors or omissions. It is your responsibility to obtain independent, professional advice. Personal information collected from you is for security purposes and to contact you should the property sell prior to auction. We may use this information to provide you with other real estate services including referrals to authorised financial services providers. Visit our website at www.marshallwhite.com.au for our privacy policy.