



MARSHALLWHITE

9-11 Ashley Grove
Malvern



Timeless Elegance, Substantial Landholding

Magnificently situated on a north-facing 1651sqm approx. allotment with 30.41m approx. frontage near Menzies Reserve, Malvern Village, trams and schools, this immaculate single level residence is perfect to enjoy now while considering exciting options to renovate, rebuild or develop (STCA). The wide hall flows through to a generous sitting room, formal dining room, well appointed kitchen and living/dining room opening to the garden. The main bedroom with en-suite/walk in robe is accompanied by two additional bedrooms (robes) and bathroom. Includes study/fourth bedroom, alarm, double carport and auto gates.

4 2 4

Auction Thursday 25th October at 6pm

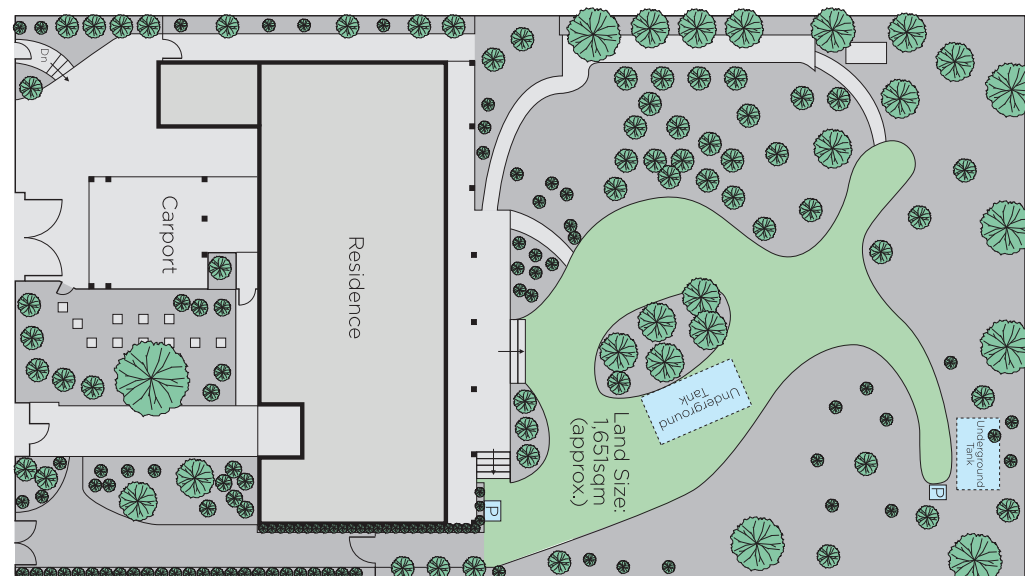
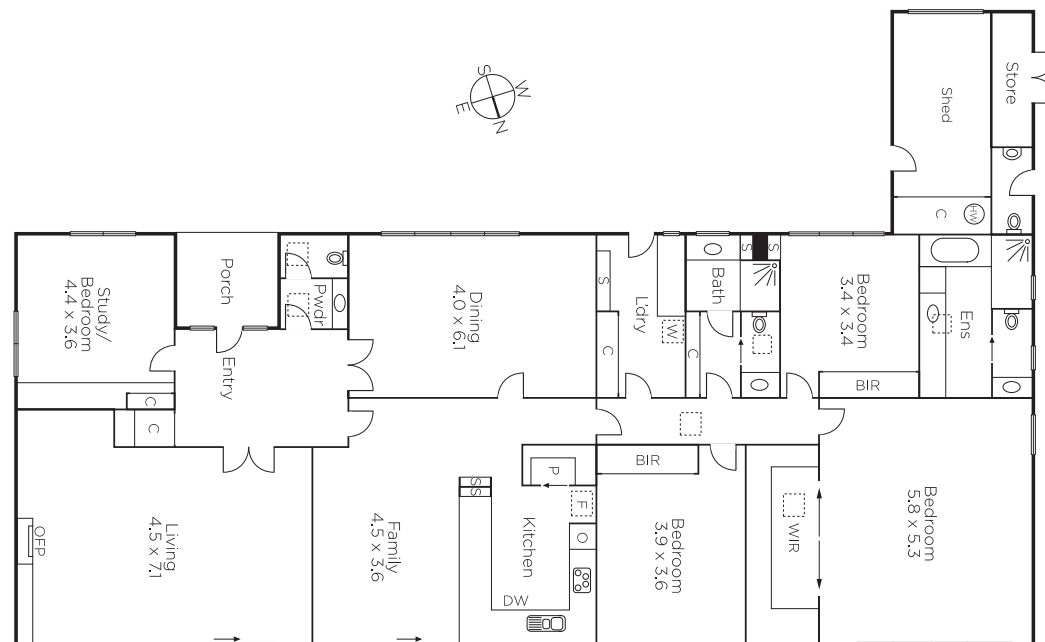
Richard Mackinnon
0414 822 579

Fraser Cahill
0400 592 572

John Manton
0411 444 930


MARSHALLWHITE

1111 High Street, Armadale



Disclaimer: Information provided is believed to be accurate as at the date of printing, no responsibility is taken for any errors or omissions. It is your responsibility to obtain independent, professional advice. Personal information collected from you is for security purposes and to contact you should the property sell prior to auction. We may use this information to provide you with other real estate services including referrals to authorised financial services providers. Visit our website at www.marshallwhite.com.au for our privacy policy.