



MARSHALLWHITE

8e/635 St Kilda Road
Melbourne



Marquise Excellence and Huge Views

Discover architectural excellence, light-filled living and big city views in the esteemed Marquise building. Spacious two-bedroom apartment has views to the Dandenong Ranges and the city, thanks to its corner position. There's an urban edge to the living zone that reveals a concrete ceiling and pipework, shadow line plasterwork, double-glazed windows and access to the undercover terrace. The oversized ensuite and bathroom add to the spacious feel, there's a Smeg kitchen, a European laundry, and remote-control blinds. Well-maintained gym, outdoor heated pool, and convenient basement parking for you and your guests.

2 2 1

Private Sale

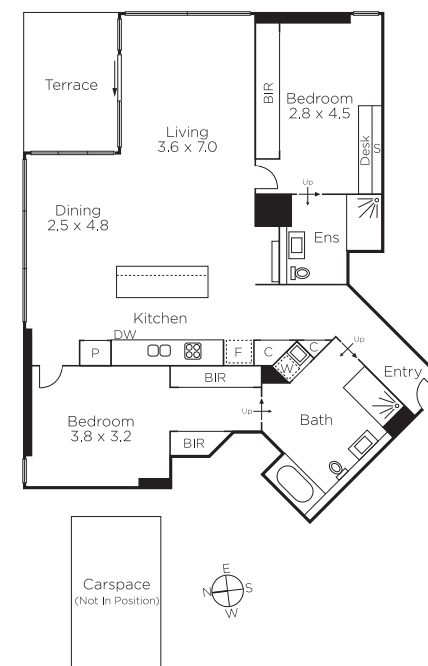
Andrew Campbell
0419 366 545

Sam Hobbs
0404 164 444

Dan McGuire
0411 514 103


MARSHALLWHITE

225 Bay Street, Brighton



Disclaimer: Information provided is believed to be accurate as at the date of printing, no responsibility is taken for any errors or omissions. It is your responsibility to obtain independent, professional advice. Personal information collected from you is for security purposes and to contact you should the property sell prior to auction. We may use this information to provide you with other real estate services including referrals to authorised financial services providers. Visit our website at www.marshallwhite.com.au for our privacy policy.