



MARSHALLWHITE  
ONE

8C/21 The Esplanade  
St Kilda



## Breath-taking Views on the Esplanade

A once in a lifetime opportunity to live on The Esplanade with the most spectacular 8th floor views that span from Luna Park and The Palais over the water and all the way to the city skyline, this comfortably presented one bedroom apartment is an authentic St Kilda icon that allows you to spend your days enjoying the breath-taking panorama and playing 'spot the Melbourne landmark'. Livable or lettable, the home also offers a terrific opportunity to introduce your own sense of style and comprises an open-plan kitchen/meals/living with a balcony and the most incredible views Melbourne has to offer. With secure undercover parking and elevator access, the home also has robes in the bedroom but is most differentiated by its views. Make 'The Espy' your new local, wander to Acland St or to Fitzroy St for shops, cafes and restaurants, this incredible location is just across the road from the waterfront and close to transport as well.

8c-21theesplanade-stkilda.com

1 1 1

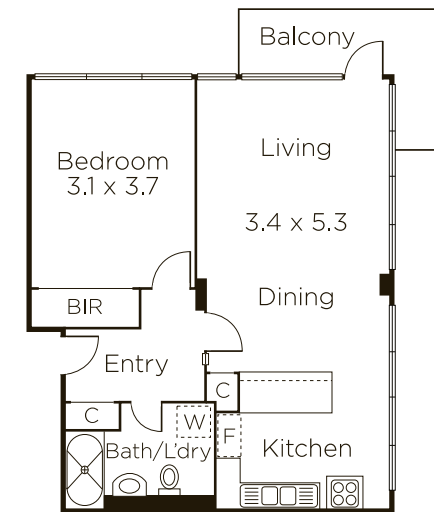
Auction Sunday 29th October at 11.30am

Bradley Steinbach 0403 539 038

Joseph Ben-Danan 0408 135 948

101 Dundas Place Albert Park

9822 9999 mwone.com.au



  
**MARSHALLWHITE**  
**ONE**

Disclaimer: Information provided is believed to be accurate as at the date of printing, no responsibility is taken for any errors or omissions. It is your responsibility to obtain independent, professional advice. Personal information collected from you is for security purposes to contact you should the property sell prior to auction. We may use this information to provide you with other real estate services including referrals to authorized financial services' providers. Visit our website at [www.mwone.com.au](http://www.mwone.com.au) for our privacy policy.