



MARSHALLWHITE

896 Malvern Road  
Armadale









## "Victoria Terrace"

Set in one of Melbourne's most picturesque and highly regarded locations, this Victorian residence's irresistible blend of rich period integrity and casual contemporary design creates the ideal environment for relaxed modern living just a short stroll to High St shops, Hawksburn Village, Beatty Avenue, a range of schools and transport. Traditional high ceilings add to the grandeur of the arched entrance hall, gracious sitting room with a marble gas fire and beautiful formal dining room also with a marble gas fire, both opening to the garden through classic French doors. Timber floors flow through the sublime gourmet kitchen with stone benches and Miele oven, enhanced by an adjoining casual meals area where light reigns. Sky-lit stairs lead up to the exceptionally generous main bedroom with marble gas fire, full width balcony, marble en-suite and built in robe, two additional double bedrooms and second bathroom. At the front of the terrace, a tessellated-tiled verandah precedes the manicured, north facing courtyard garden and secure carport. This glorious home also includes a stylish downstairs bathroom, ducted heating, modern laundry, and storage.

3  3  1 

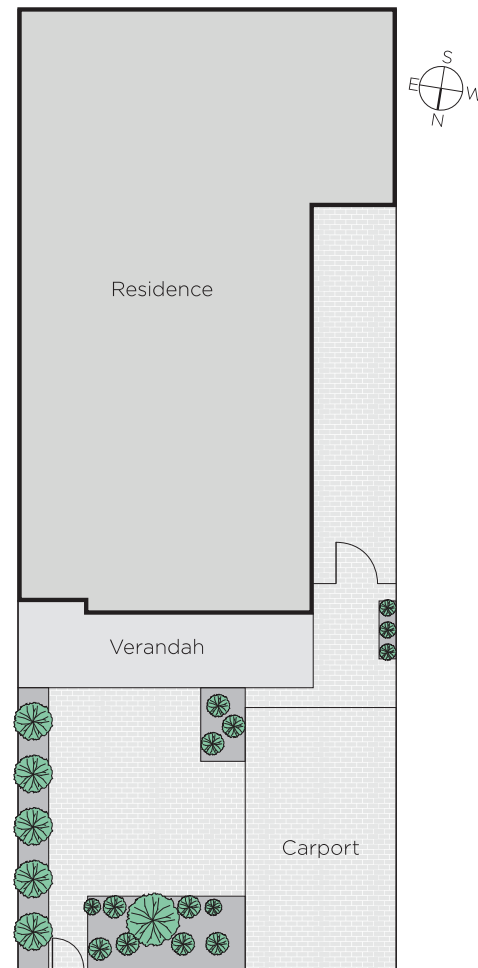
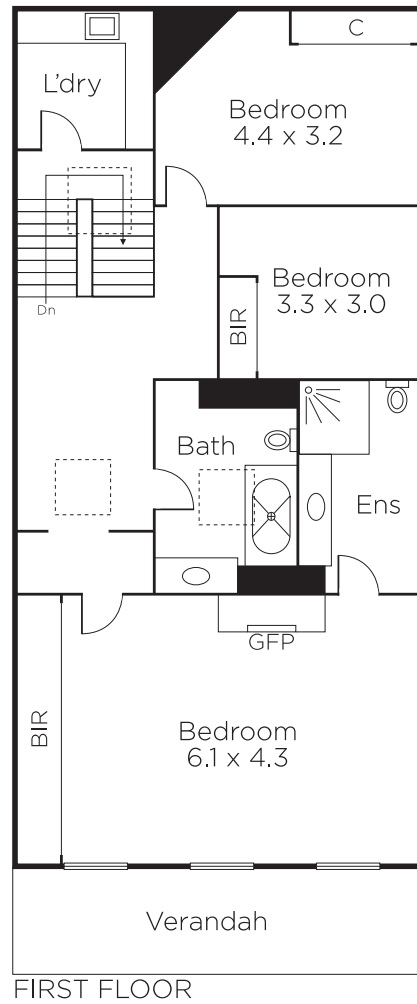
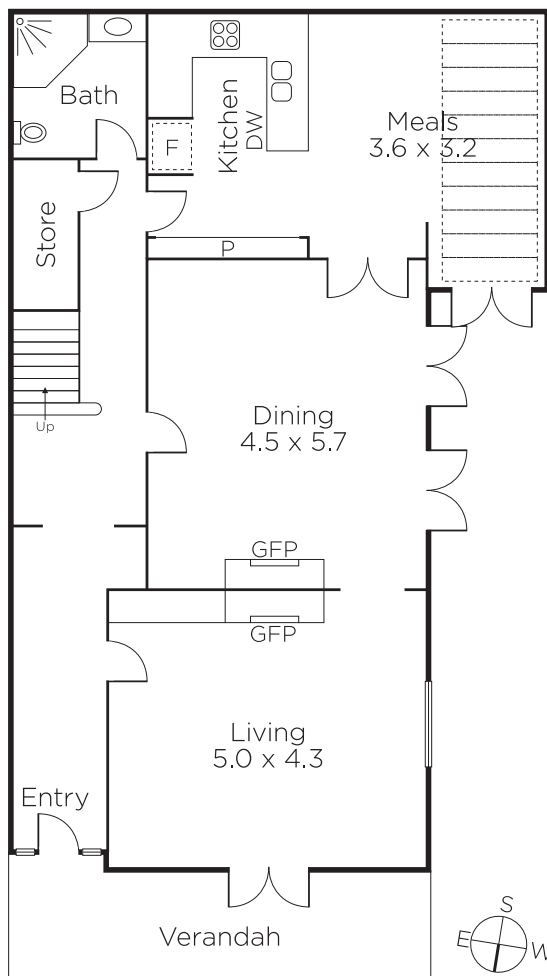
Auction Saturday 23rd February at 11.30am

**Michael Martin**  
0478 011 216

**Fiona Ansell-Jones**  
0410 325 240

  
MARSHALLWHITE

1111 High Street, Armadale



Disclaimer: Information provided is believed to be accurate as at the date of printing, no responsibility is taken for any errors or omissions. It is your responsibility to obtain independent, professional advice. Personal information collected from you is for security purposes and to contact you should the property sell prior to auction. We may use this information to provide you with other real estate services including referrals to authorised financial services' providers. Visit our website at [www.marshallwhite.com.au](http://www.marshallwhite.com.au) for our privacy policy.