



MARSHALLWHITE

89 Claremont Avenue
Malvern





Irresistible Family Appeal

Beautifully set amidst glorious landscaped garden and pool surrounds, this instantly captivating solid brick Edwardian residence's magnificently proportioned dimensions impeccably cater to every modern family demand in a coveted pocket walking distance to Malvern Primary, Malvern station and Glenferrie Rd shops. Ultra high ceilings and doors highlight the spectacular scale in the very wide entrance hall leading to an elegant sitting room and study both with an open fireplace. Dark timber floors flow through the expansively proportioned living and dining room and a sublime gourmet kitchen boasting stone benches, marble splash-backs, European appliances and a concealed study nook. Huge glass sliders open to the absolutely stunning north-facing private landscaped garden with picturesque heated pool. A gorgeous master bedroom with open fireplace, walk in robe and chic en-suite and a second bathroom are serenely set downstairs while a sensational children's zone upstairs comprises three double bedrooms with built in robes, a large retreat and stylish bathroom. A compelling family domain, it also includes plantation shutters, alarm, zoned ducted heating, air conditioning, laundry, storage and irrigation

4  3 

Auction Saturday 27th October at 12.30pm

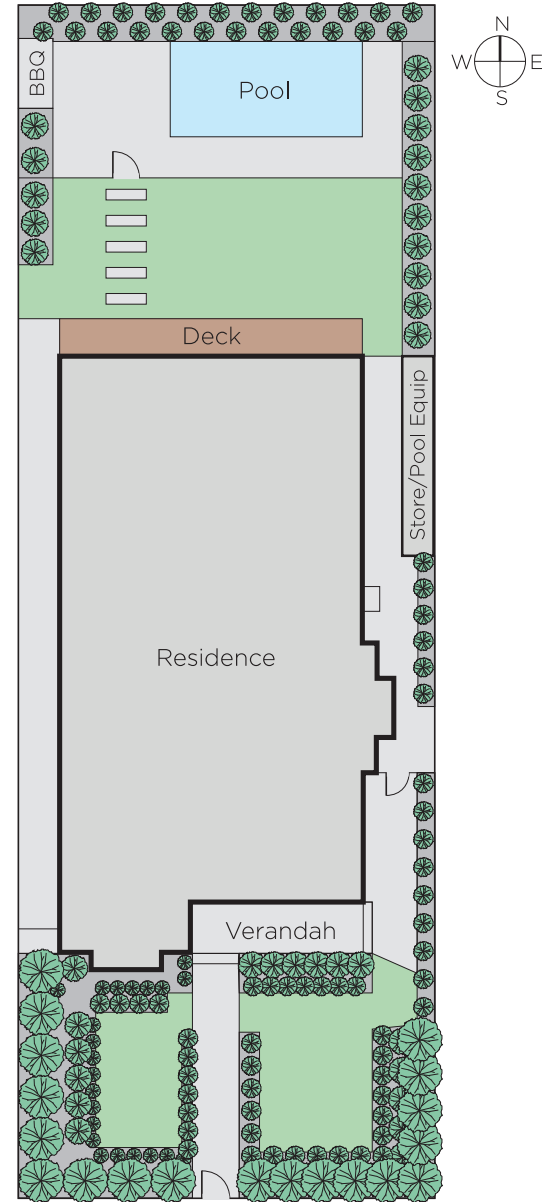
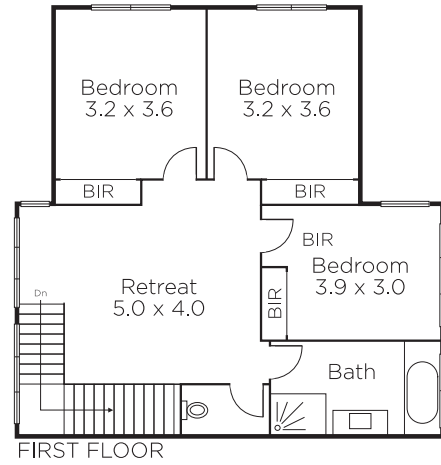
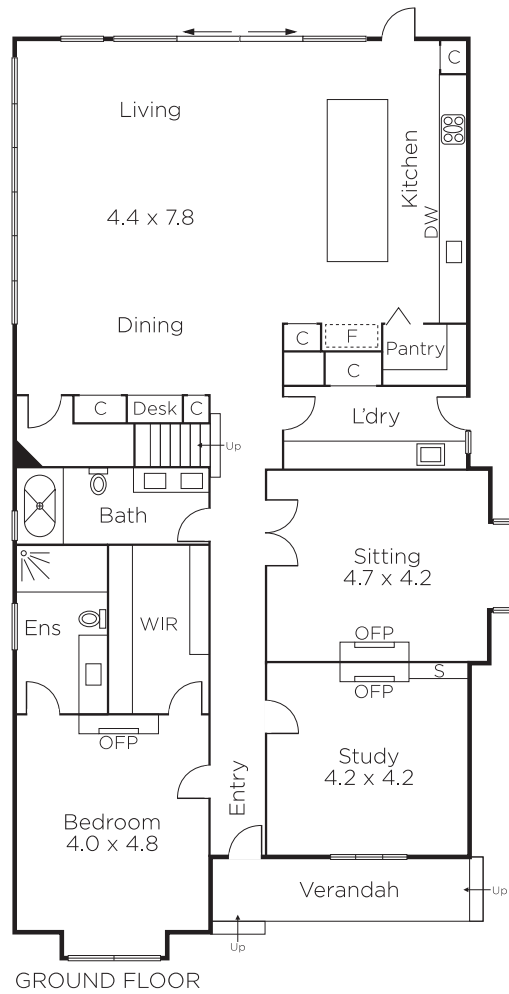
Rae Tomlinson
0418 336 234

James Tomlinson
0408 350 684

Hugh Tomlinson
0409 427 483


MARSHALLWHITE

1111 High Street, Armadale



Disclaimer: Information provided is believed to be accurate as at the date of printing, no responsibility is taken for any errors or omissions. It is your responsibility to obtain independent, professional advice. Personal information collected from you is for security purposes and to contact you should the property sell prior to auction. We may use this information to provide you with other real estate services including referrals to authorised financial services' providers. Visit our website at www.marshallwhite.com.au for our privacy policy.