




MARSHALLWHITE

8/8 Cobden Street
Kew



Capitalising on Northern Views and Sunshine

This brand new, stylish & superbly appointed tri-level townhouse designed by the renowned Architects, Peddle Thorpe boast a brilliant Kew lifestyle location. Plus a cutting-edge interior featuring generous living/dining, rear terrace & front courtyard, sleek CaesarStone/Miele appointed kitchen, powder room & laundry. The upper levels have northern views plus 3-bedrooms, main with WIR/ensuite and two family bathrooms; the top level also has a retreat or living area & study alcove opening to a roof garden/terrace. Incls. video intercom, d/heating & cooling, wool carpets, storage cage, lift to secure auto basement parking (2).

8-8cobdenstreet-kew.com

3 3.5 2

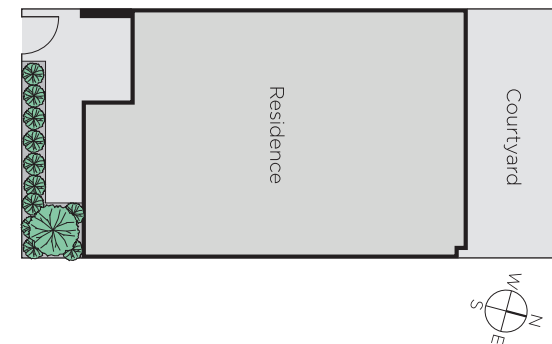
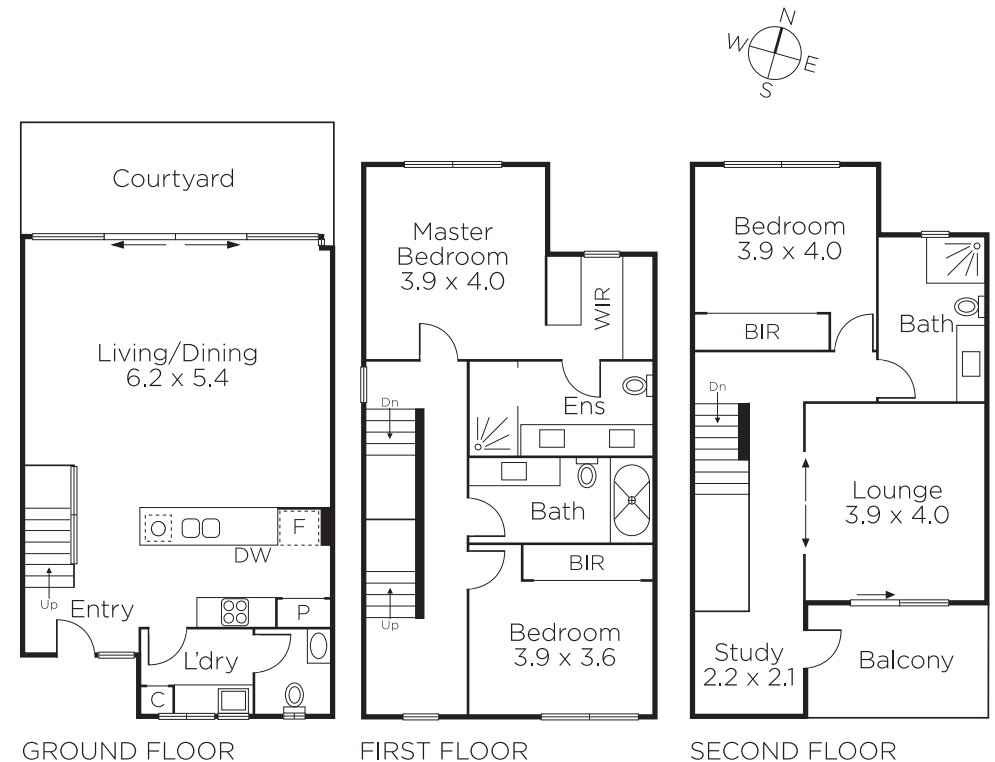
Auction Saturday 21st October at 1.30pm

Davide Lettieri 0414 018 707

Kane Penhalluriack 0406 556 445

801 Glenferrie Road Hawthorn
marshallwhite.com.au


MARSHALLWHITE



Disclaimer: Information provided is believed to be accurate as at the date of printing, no responsibility is taken for any errors or omissions. It is your responsibility to obtain independent, professional advice. Personal information collected from you is for security purposes and to contact you should the property sell prior to auction. We may use this information to provide you with other real estate services including referrals to authorised financial services' providers. Visit our website at www.marshallwhite.com.au for our privacy policy.