



MARSHALLWHITE

86 Mont Albert Road
Canterbury





Impressive Golden Mile Family Residence

Gracing a magnificent corner allotment in the highly prized Golden Mile, among some of the area's most prestigious properties, this gracious example of the "English Tudor Revival" style c1938 designed by the renowned architect of the time, Marcus Barlow. The two-storey home is highlighted by a high roof line and the spacious proportions typical of its era offering wonderful family accommodation and flexibility. Featuring a circular entrance hall with stained timber woodwork, curved staircase and herringbone parquet floors, formal sitting room with bay window and OFP, dining room and TV room/study. Plus a generous family room with computer station, stylish granite kitchen with a complement of prestige Bosch appliances and adjacent laundry and powder room leading to a deck and paved outdoor entertaining area with gas mains barbeque, lush garden and separate self-contained guest accommodation. Whilst upstairs has four double bedrooms (BIRs), a family bathroom and air conditioned retreat. Other features include no Heritage overlay, alarm, double glazing, hydronic heating, sprinkler system, auto gates & double garage (access from Rubens Grove). Land size: 905sqm approx.

86montalbertroad-canterbury.com

6  2  3 

Auction Saturday 24th March at 3.30pm

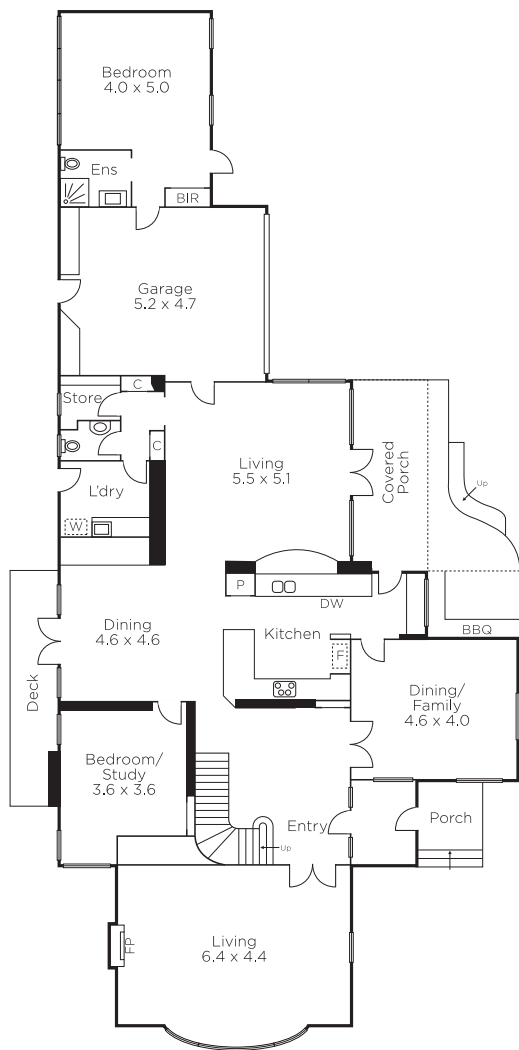
James Tostevin
0417 003 333

Sally O'Connell
0413 474 474

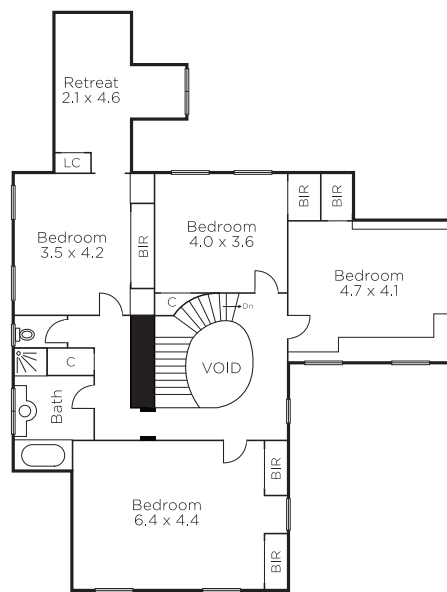
Scarlett Hang
0405 054 888


MARSHALLWHITE

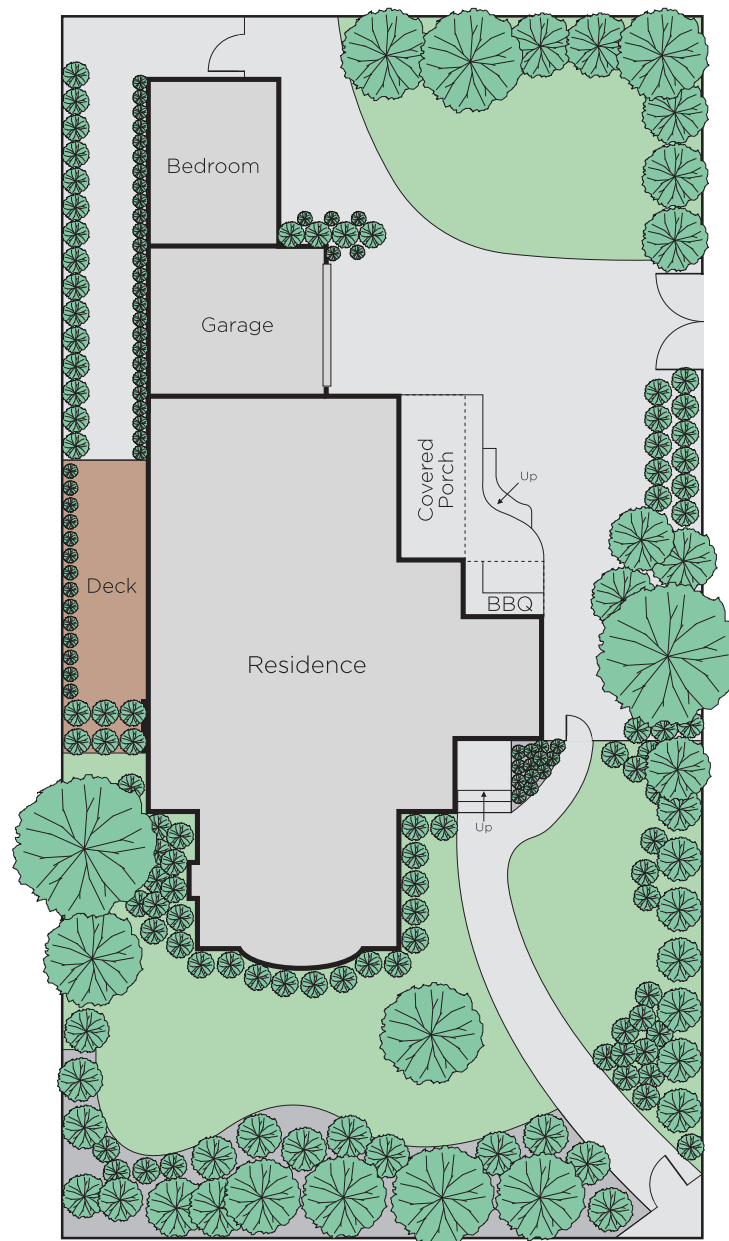
801 Glenferrie Road, Hawthorn



GROUND FLOOR



FIRST FLOOR



Disclaimer: Information provided is believed to be accurate as at the date of printing, no responsibility is taken for any errors or omissions. It is your responsibility to obtain independent, professional advice. Personal information collected from you is for security purposes and to contact you should the property sell prior to auction. We may use this information to provide you with other real estate services including referrals to authorised financial services' providers. Visit our website at www.marshallwhite.com.au for our privacy policy.