




MARSHALLWHITE

86 Kilby Road
Kew East





Designer Style, Desirable Setting

Commanding an elevated position opposite parkland, this recently renovated single level c1930's solid brick residence's absolutely stunning indoor and outdoor dimensions showcase a flawless flair for design and meticulous eye for detail. Enviably situated near Hays Paddock, golf courses, bike path, the city bus, Yarra trails, freeway access and Harp Village, its lifestyle appeal is immeasurable.

Behind a gorgeous garden of succulents, the entrance hall flows through to an inviting living room, generous dining area and a sublime gourmet kitchen with stone benches and Miele oven. Bi-fold doors open to a glorious private garden sanctuary with al fresco dining decks and a freestanding retreat/studio. Overlooking the garden, the main bedroom with built in robe and a stylish ensuite is accompanied by two additional double bedrooms with built in robes, bright bathroom and evocative fitted study.

Totally irresistible, it also includes timber floors, alarm, hydronic heating, storage and off street parking.

www.86kilbyroad-keweast.com

3  2  4 

Auction Saturday 17th June at 1.30pm

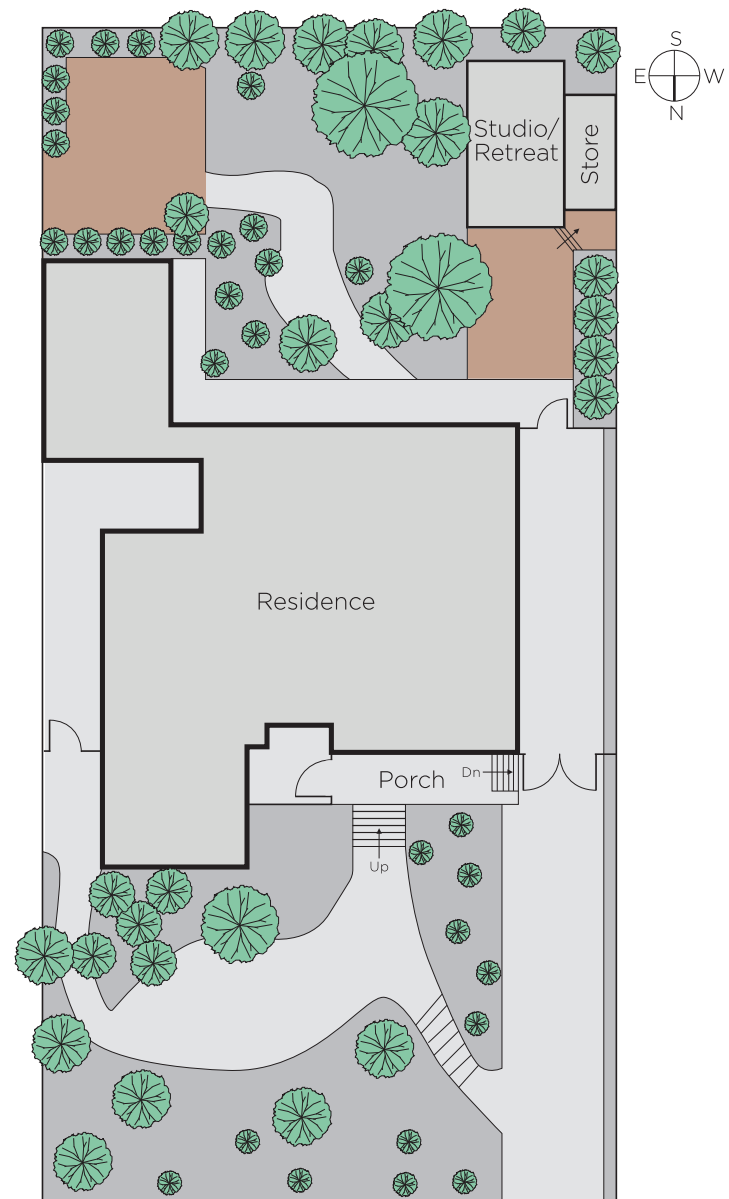
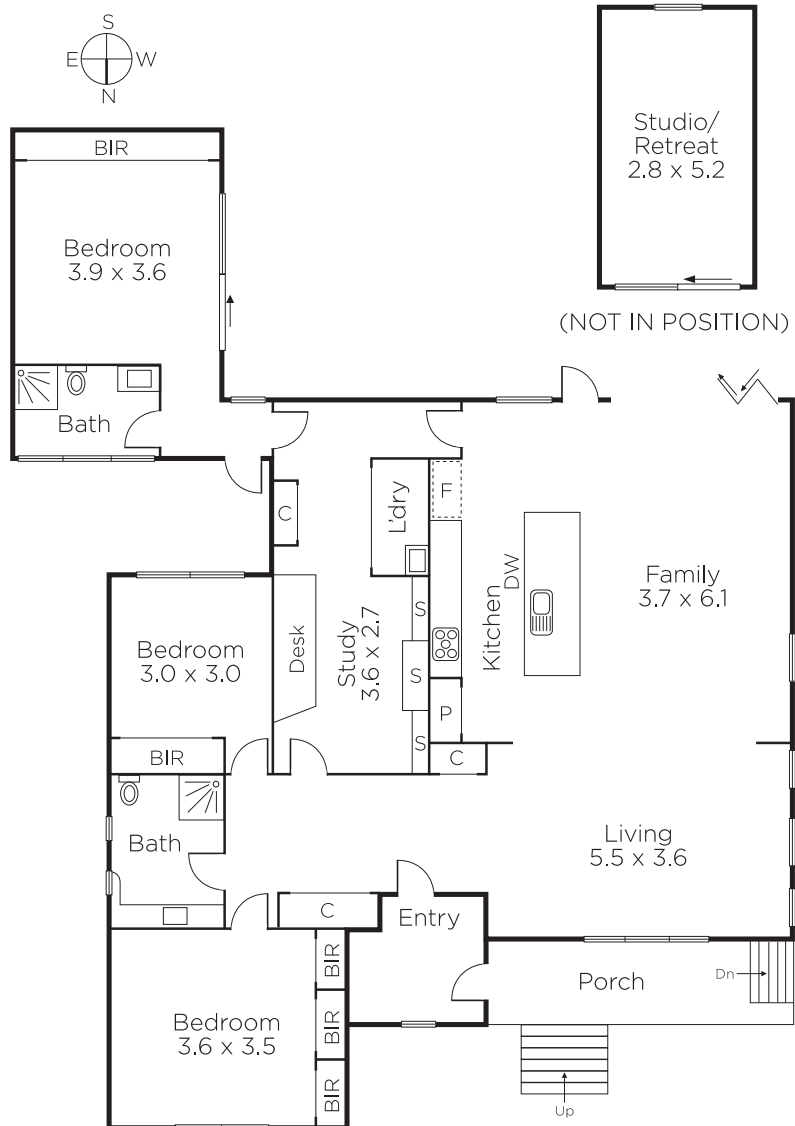
Mark Sproule 0408 090 205

Nicholas Franzmann 0412 247 175

801 Glenferrie Road Hawthorn

marshallwhite.com.au


MARSHALLWHITE



Disclaimer: Information provided is believed to be accurate as at the date of printing, no responsibility is taken for any errors or omissions. It is your responsibility to obtain independent, professional advice. Personal information collected from you is for security purposes and to contact you should the property sell prior to auction. We may use this information to provide you with other real estate services including referrals to authorised financial services' providers. Visit our website at www.marshallwhite.com.au for our privacy policy.