



83

84



MARSHALLWHITE

83 Evans Street  
Port Melbourne





## A Remarkably Refined Period Residence

A picturesque two-bedroom period residence, epitomising traditional charm and with a subtle incorporation of contemporary appointments is positioned on the fringe of leafy Turner Reserve. Beyond the white picket fence and verandah with iron-laced entry are vivid interiors, an arching hall and timber floors throughout. The first bedroom encompasses a fireplace and built-in shelving, while the second bedroom features built-in robes. Zoned living/dining areas are complemented by a kitchen and courtyard with low-maintenance garden. The central bathroom is well-appointed with a bathtub/shower plus laundry facilities.

83evansstreet-portmelbourne.com

2 1

Auction Saturday 29th July at 12.30pm

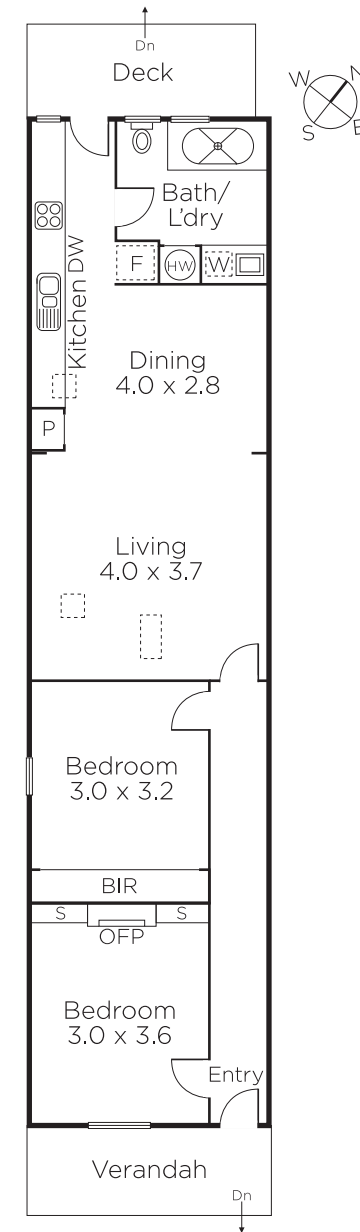
Sarah Wood 0408 902 827

Scott O'Halloran 0413 464 473

Kaine Lanyon 0411 875 478

101 Dundas Place Albert Park  
marshallwhite.com.au

  
MARSHALLWHITE



Disclaimer: Information provided is believed to be accurate as at the date of printing, no responsibility is taken for any errors or omissions. It is your responsibility to obtain independent, professional advice. Personal information collected from you is for security purposes and to contact you should the property sell prior to auction. We may use this information to provide you with other real estate services including referrals to authorised financial services' providers. Visit our website at [www.marshallwhite.com.au](http://www.marshallwhite.com.au) for our privacy policy.