



MARSHALLWHITE

826 Riversdale Road
Camberwell



Cloneen c.1927 - A Rich Past, An Exciting Future

On a prime south east corner in a prestigious Camberwell position, "Cloneen" c.1927, has faithfully served three generations of the one family since its construction. Largely original with its handsome period features virtually untouched, its gracious proportions and rich strength of character stand ready for a new family chapter that strikes the perfect balance between early traditions, state of the art contemporary elegance and a 829sqm (approx.) block with rear access via Dominic Street. Includes high decorative ceilings, brick fireplaces, deep leadlight windows and original panelled hallway plus off-street parking.

826riversdaleroad-camberwell.com

4 1 2

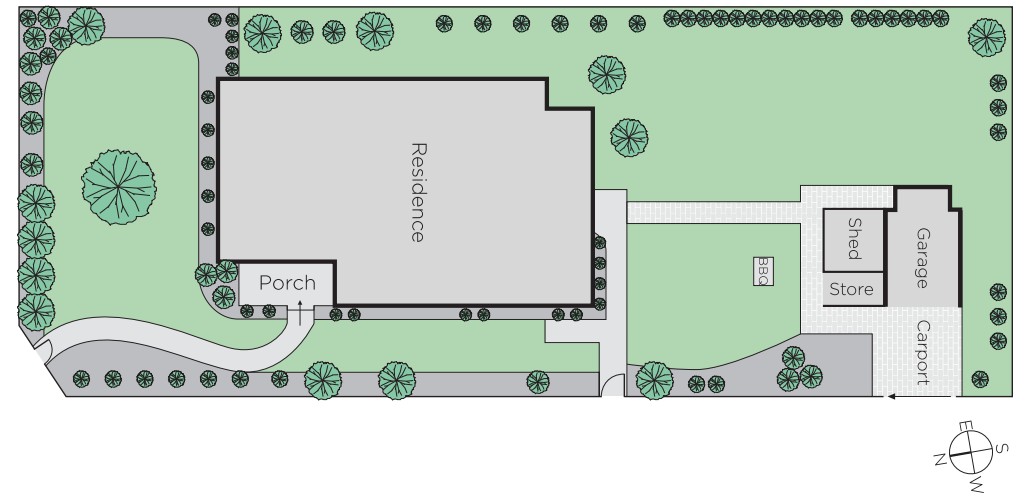
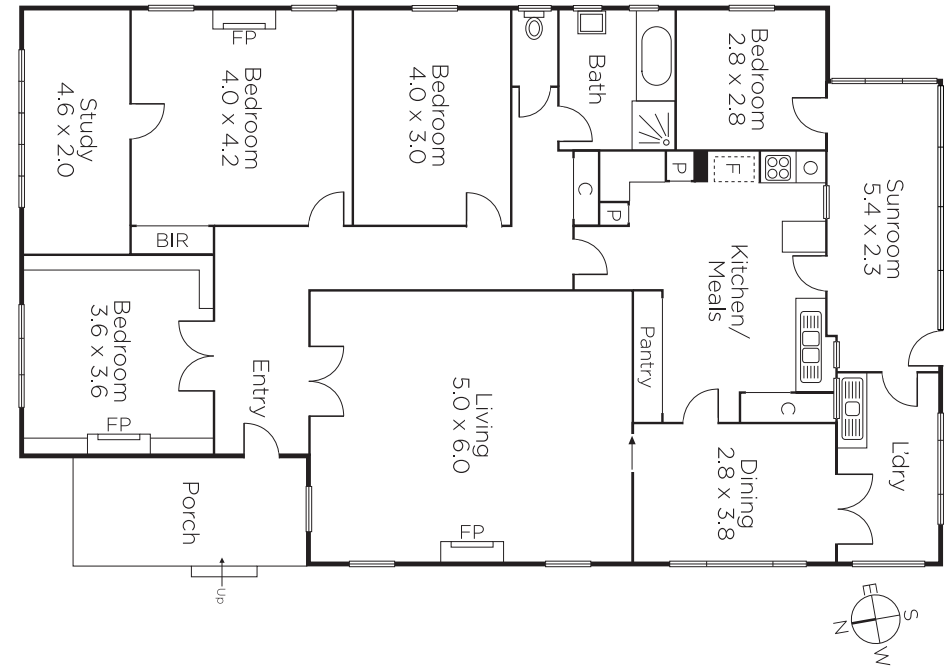
Auction Saturday 28th October at 10.30am

Cameron Edgoose 0438 064 212

John Li 0476 384 718

801 Glenferrie Road Hawthorn
marshallwhite.com.au

MARSHALLWHITE



Disclaimer: Information provided is believed to be accurate as at the date of printing, no responsibility is taken for any errors or omissions. It is your responsibility to obtain independent, professional advice. Personal information collected from you is for security purposes and to contact you should the property sell prior to auction. We may use this information to provide you with other real estate services including referrals to authorised financial services' providers. Visit our website at www.marshallwhite.com.au for our privacy policy.