



8



MARSHALLWHITE

8 Kyeamba Grove
Toorak



Timeless Elegance in Elite Cul De Sac

In a tranquil cul de sac near Kooyong Village & station, schools & trams, this c1930's residence's inviting spaces & sun-drenched garden & pool setting deliver instant family appeal with scope to further improve. (STCA). The formal dining room & sitting room with open fire overlook a northwest garden with pool. The well-equipped kitchen & living/dining open to a private northeast courtyard. The main bedroom with en-suite & robe is accompanied by two additional bedrooms (robes), a terrace & bathroom. Includes video intercom, powder-room, Euro-laundry, auto gates & garage.

3 2 3

Auction Saturday 8th December at 12.30pm

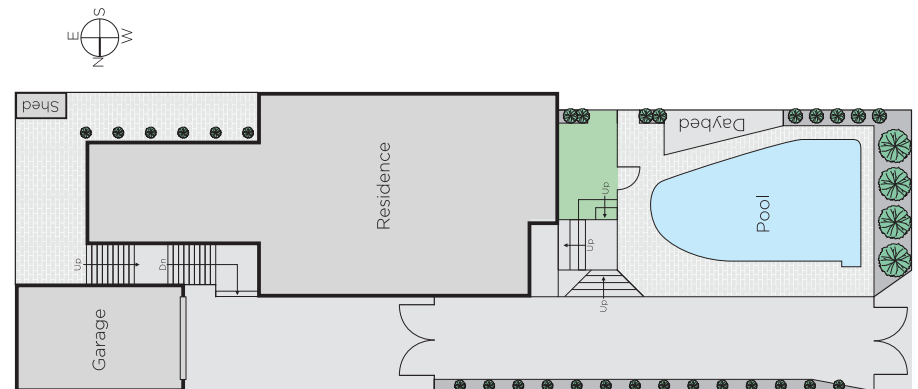
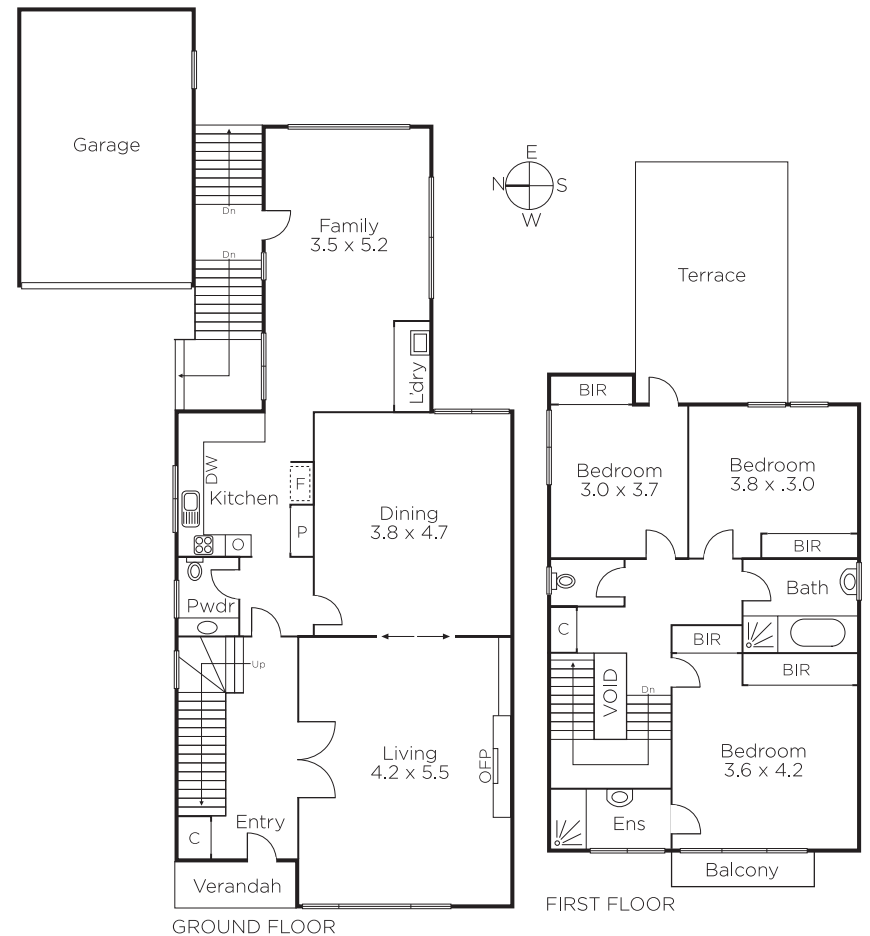
Samantha Kallend
0478 580 797

James Tomlinson
0408 350 684

Mark Harris
0414 799 343


MARSHALLWHITE

1111 High Street, Armadale



Disclaimer: Information provided is believed to be accurate as at the date of printing, no responsibility is taken for any errors or omissions. It is your responsibility to obtain independent, professional advice. Personal information collected from you is for security purposes and to contact you should the property sell prior to auction. We may use this information to provide you with other real estate services including referrals to authorised financial services providers. Visit our website at www.marshallwhite.com.au for our privacy policy.