




MARSHALLWHITE

8 Kefford Court
Mont Albert North



Sensational Style, Superb Location

Bathed in northern light, the expansive living and dining room featuring timber floors and wide expanses of glass is served by a gourmet kitchen appointed with stone benches and stainless steel appliances. Bi-fold doors open the living spaces to a large deck overlooking the easily maintained private garden with cubby and sand pit. The generous main bedroom with walk in robe and chic en-suite is complemented by three additional double bedrooms and a stylish bathroom. Land size 576sqm approx.

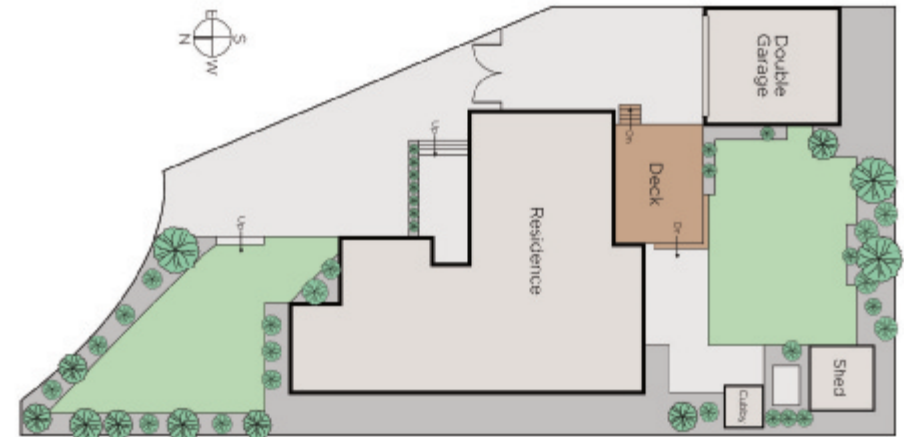
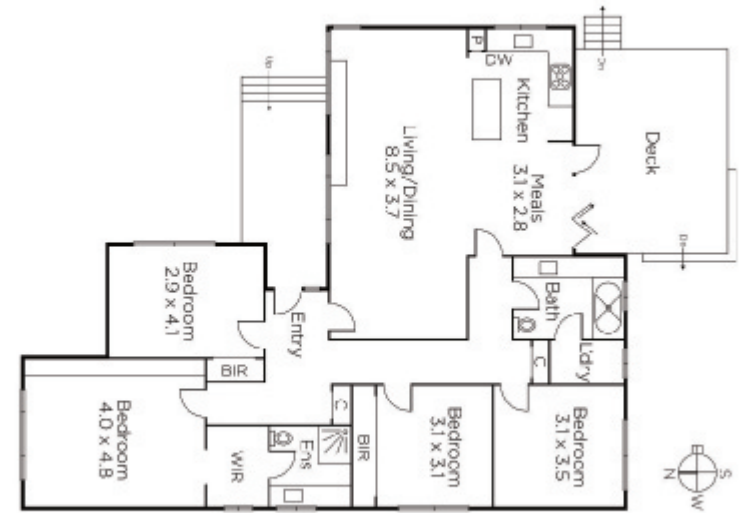
4 2 2

Auction Saturday 1st December at 3.30pm

Shamit Verma
0401 137 597

Jack Moss
0439 378 954

Laurence Murphy
0421 829 028



MARSHALLWHITE

801 Glenferrie Road, Hawthorn

Disclaimer: Information provided is believed to be accurate as at the date of printing, no responsibility is taken for any errors or omissions. It is your responsibility to obtain independent, professional advice. Personal information collected from you is for security purposes and to contact you should the property sell prior to auction. We may use this information to provide you with other real estate services including referrals to authorised financial services providers. Visit our website at www.marshallwhite.com.au for our privacy policy.