



MARSHALLWHITE

8 Francis Crescent
Glen Iris



Classic Charm Meets Contemporary Style

The picturesque exterior of this charming c1922 period residence creates an appealing first impression matched by interior spaces that have been brilliantly renovated to offer outstanding family flexibility near Gardiner's Creek, Ashburton Village, stations, schools, sports grounds & freeway access. Brushbox floors flow through the ultra wide hall to a formal dining room, gourmet kitchen & expansive living/dining room opening to private garden. The main bedroom with stylish ensuite & walk in robe is complemented by three double bedrooms, chic bathroom & large retreat. Includes alarm, laundry, storage & 2 car-spaces.

8francisrescent-gleniris.com

4 2 2

Auction Saturday 5th May at 9.30am

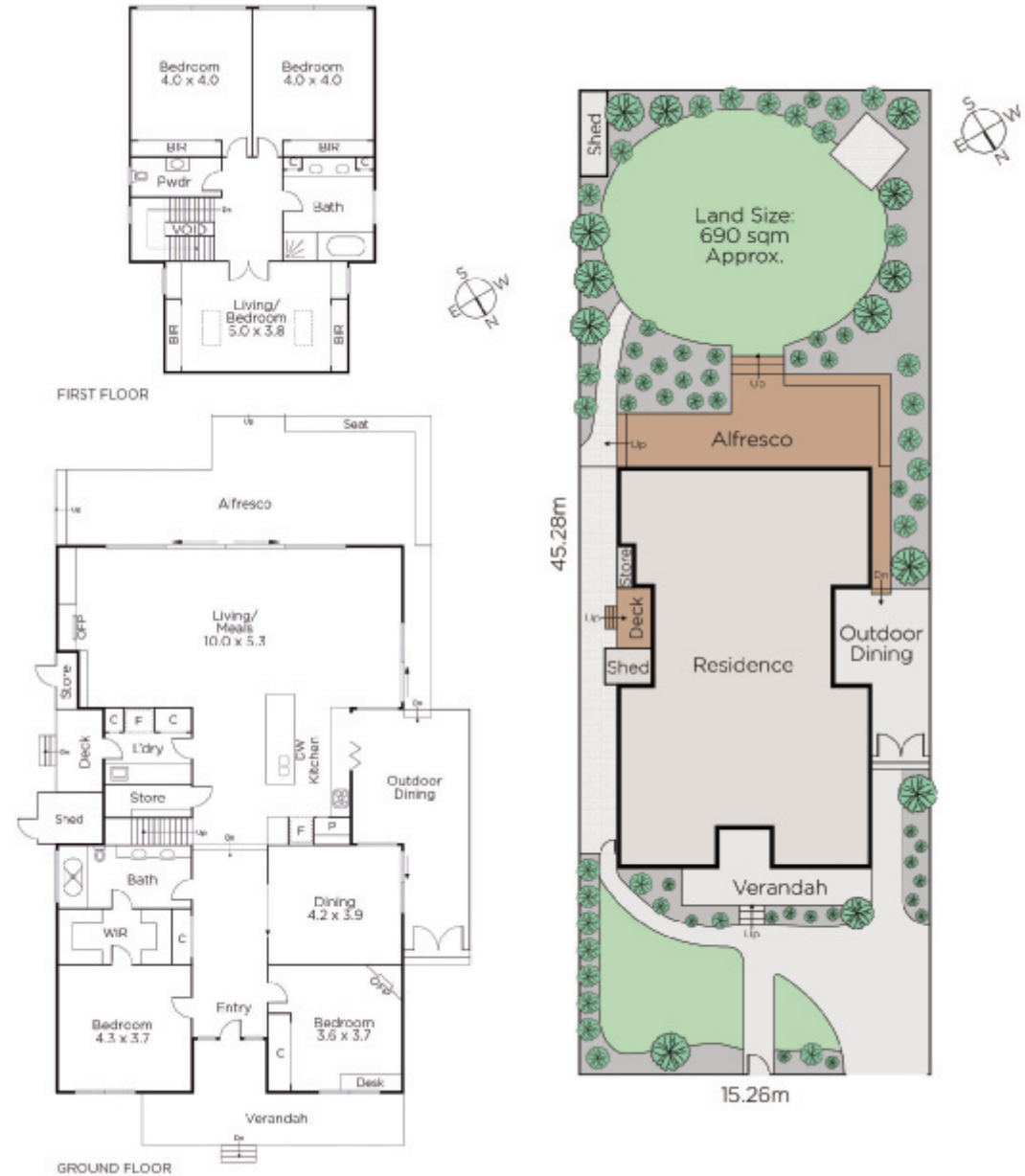
Jason Brinkworth
0416 006 282

Justin Krongold
0403 163 355

Richard Mackinnon
0414 822 579

MARSHALLWHITE

1111 High Street, Armadale



Disclaimer: Information provided is believed to be accurate as at the date of printing, no responsibility is taken for any errors or omissions. It is your responsibility to obtain independent, professional advice. Personal information collected from you is for security purposes and to contact you should the property sell prior to auction. We may use this information to provide you with other real estate services including referrals to authorised financial services providers. Visit our website at www.marshallwhite.com.au for our privacy policy.