



MARSHALLWHITE

78 Wattletree Road
Armadale



Innovative, Inspired, Inviting

Symmetry, serenity and sense of style is brilliantly reflected throughout this spectacular 3 y.o. residence designed by architect Craig Tan and short-listed in the 2017 Houses Awards. A double height hall introduces an expansive sitting room with private north garden, state of the art kitchen, beautiful dining space, living room, study nook and 2 low maintenance gardens. The main bedroom with robe and lavish en-suite is matched by two additional bedrooms with robes, retreat/4th bedroom and marble bathroom. Includes alarm, CCTV, powder-room, laundry and internally accessed double garage. Land size: 308sqm (approx.)

3 3 2

Auction Saturday 24th November at 12.30pm

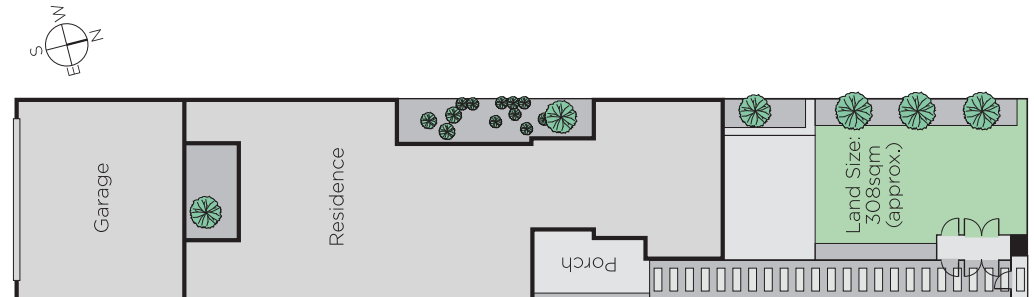
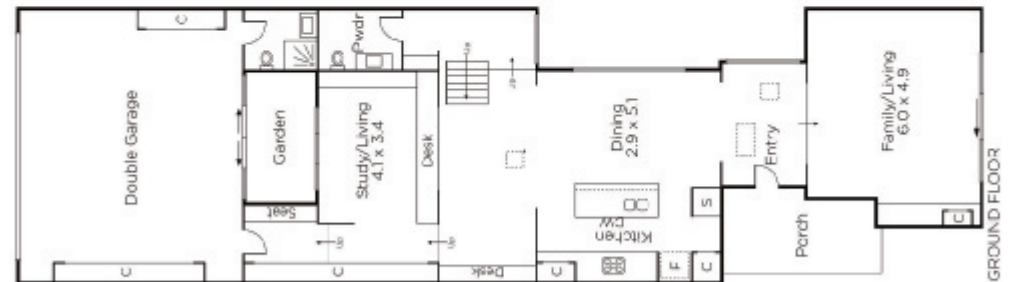
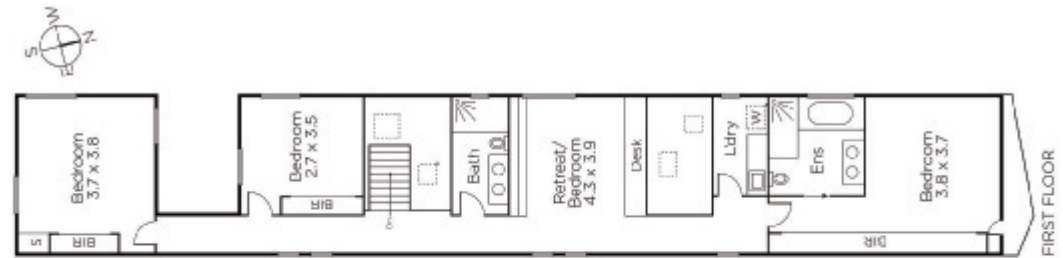
David Volpato
0414 701 983

Madeline Kennedy
0411 873 913

James Redfern
0412 360 667


MARSHALLWHITE

1111 High Street, Armadale



Disclaimer: Information provided is believed to be accurate as at the date of printing, no responsibility is taken for any errors or omissions. It is your responsibility to obtain independent, professional advice. Personal information collected from you is for security purposes and to contact you should the property sell prior to auction. We may use this information to provide you with other real estate services including referrals to authorised financial services providers. Visit our website at www.marshallwhite.com.au for our privacy policy.