



MARSHALLWHITE

77 Normanby Road
Kew



48.76 m

1032sqm
(approx.)

21.15 m



Sweeping Views and Over 1,000sqm approx.

In a brilliant, elevated position with westerly views, this ideal new home site is set on a huge block of 1032sqm approx with 21.1m frontage to Normanby Road. Well maintained by the one family since its 1978 origins as a Merchant Builders home, the current home is bursting with character and comprises four bedrooms, 2.5 bathrooms, four living areas including casual and formal options, a beautifully renovated kitchen, in-ground solar-heated swimming pool and double garage. A sweeping verandah surrounds the home offering north and west orientation and idyllic garden and mountain views. While the ground level comprises an abundance of charming, versatile spaces and unique design features, the lower ground features a huge retreat or fourth living space, opening to the substantial, leafy backyard. Beyond this extraordinary property the prestigious Kew lifestyle awaits, with Harp Village cafes and High Street, Cotham Road and Burke Road trams just moments away, as are many of the area's finest private schools. A rare offering for those with the ambition and inspiration to take advantage of this incredible opportunity.

77normanbyroad-kew.com

5  2  2 

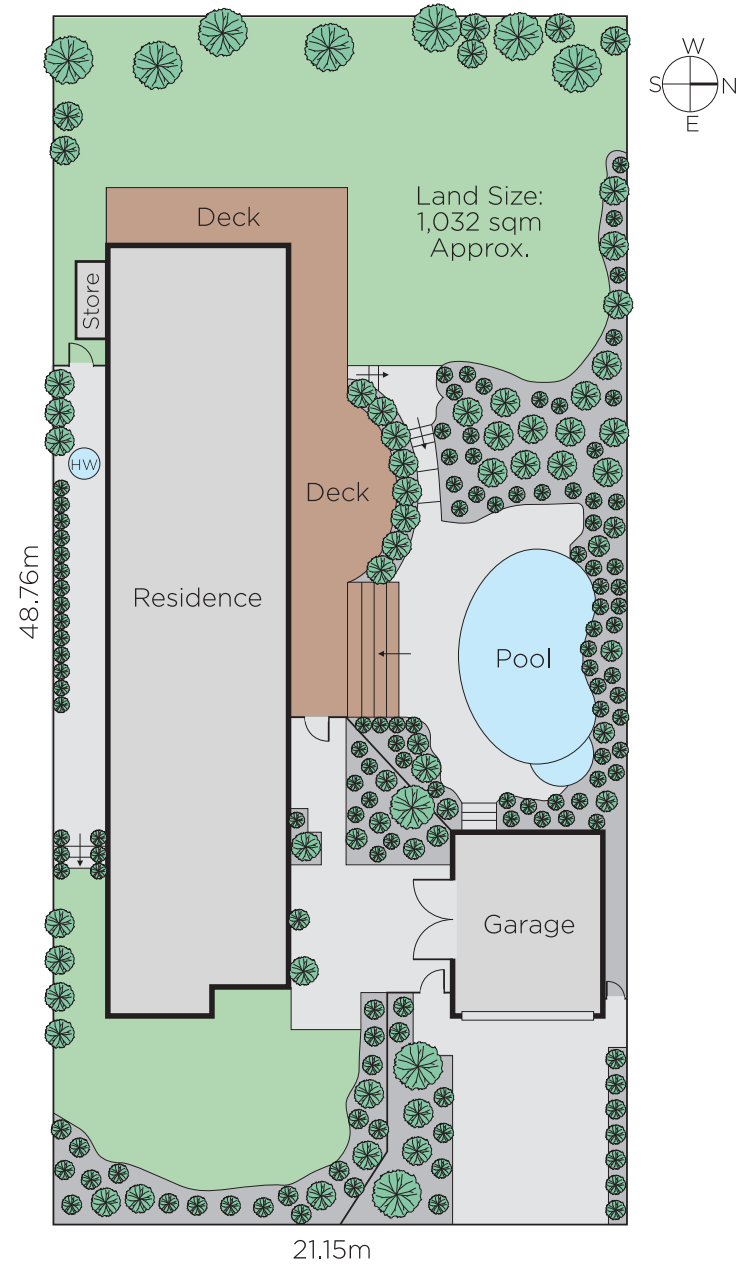
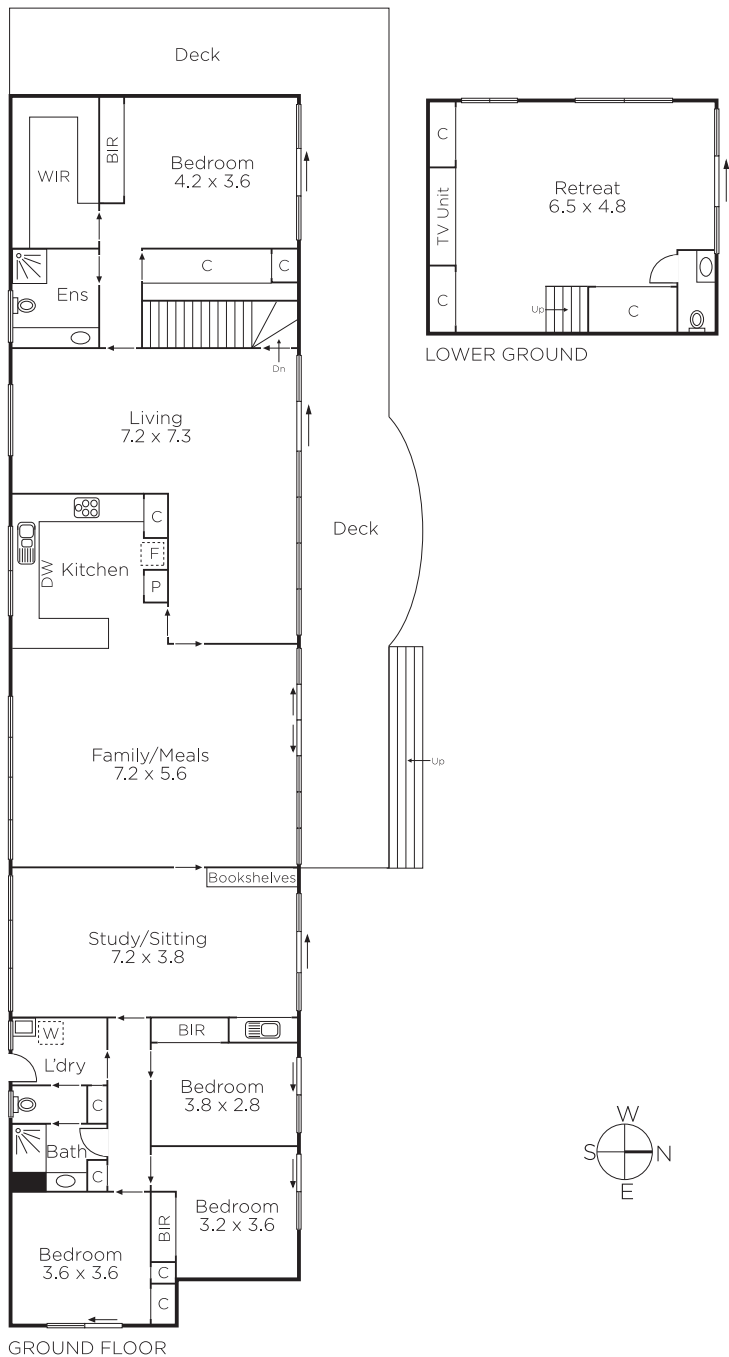
Auction Saturday 5th May at 11.30am

Chris Barrett
0412 927 409

Peter Mitchell
0418 374 556


MARSHALLWHITE

801 Glenferrie Road, Hawthorn



Disclaimer: Information provided is believed to be accurate as at the date of printing, no responsibility is taken for any errors or omissions. It is your responsibility to obtain independent, professional advice. Personal information collected from you is for security purposes and to contact you should the property sell prior to auction. We may use this information to provide you with other real estate services including referrals to authorised financial services' providers. Visit our website at www.marshallwhite.com.au for our privacy policy.