



MARSHALLWHITE  
ONE

7/568 New Street  
Brighton



## Chic Designer Domain

This generously proportioned, one bedroom residence features two delightful courtyards, attractive leafy outlooks and a cosmopolitan, low maintenance lifestyle in a privileged bayside location near so many amenities on Ormond Rd, Glen Huntly Rd and the waterfront itself. Bosch-equipped with Caesar Stone benchtops, the home's open-plan kitchen/meals/living is a streamlined designer haven that enjoys a lovely flow to a large entertainer's courtyard, all with established trees and a golf course forming a stunning backdrop. Air conditioned, the home also features mirrored robes in the bedroom, a big bathroom, European laundry, undercover parking with storage cage and intercom entry. The selection of local cafes, restaurants and bars is both diverse and first class, plus there is terrific shopping and public transport at your doorstep, not to mention Elsternwick Park and the beach as well.

7-568newstreet-brighton.com

1 1 1

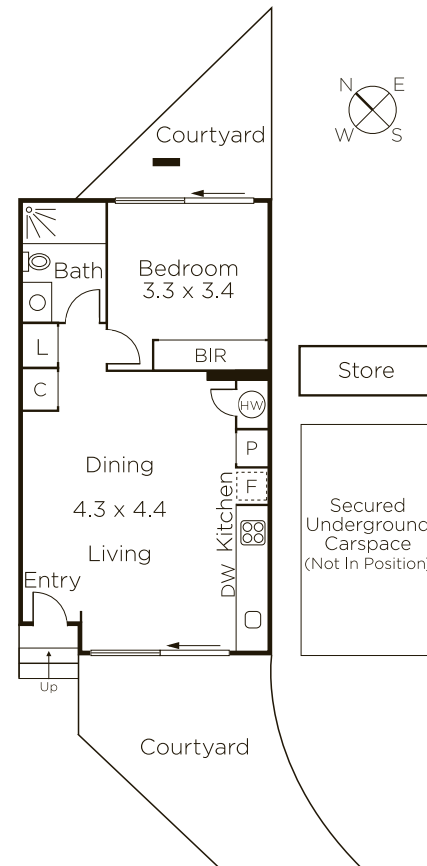
Auction Saturday 13th May at 12.30pm

Spencer Mitchell 0400 111 991

Holly Gillham 0423 564 688

225 Bay Street Brighton

9822 9999 mwone.com.au



MARSHALLWHITE  
ONE

Disclaimer: Information provided is believed to be accurate as at the date of printing, no responsibility is taken for any errors or omissions. It is your responsibility to obtain independent, professional advice. Personal information collected from you is for security purposes to contact you should the property sell prior to auction. We may use this information to provide you with other real estate services including referrals to authorized financial services providers. Visit our website at [www.mwone.com.au](http://www.mwone.com.au) for our privacy policy.