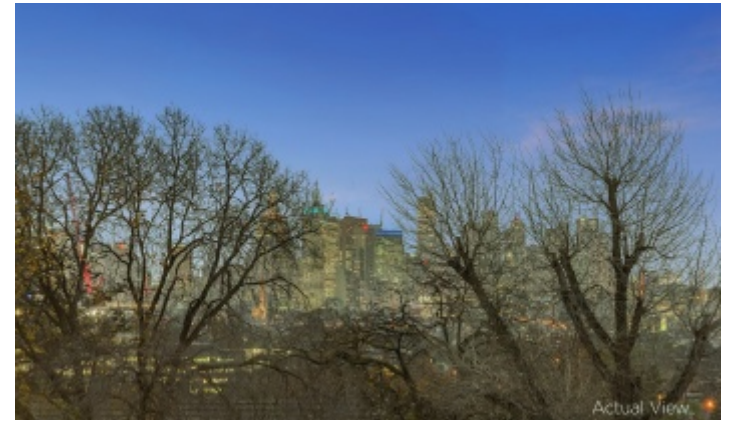




  
MARSHALLWHITE  
ONE  
7/508 Glenferrie Road  
Hawthorn



## Amazing City Views on Scotch Hill

Enviably located in the coveted Scotch Hill precinct and featuring stunning city views, this sophisticated and large (approx. 67sqm), top floor, one-bedroom apartment is the perfect entry point into one of Melbourne's most prestigious suburbs. Whether you are a young professional, first home buyer, or savvy investor, you'll love everything about this apartment. Enter through the spacious hallway entrance into a large living room featuring reverse-cycle, air conditioning and boasting north-west afternoon light. The huge master bedroom features large windows and built-in robes and is served by a central bathroom with new, modern shower over bath. The kitchen features modern appliances and a separate area where you can dine while watching the glorious sunsets and the city skyline. Perfectly positioned within walking distance to parks, Swinburne University, cafes/restaurants, plus easy city access with plenty of public transport options.

7-508glenferrieroad-hawthorn.com



Expressions of Interest Close 6th August at 5pm

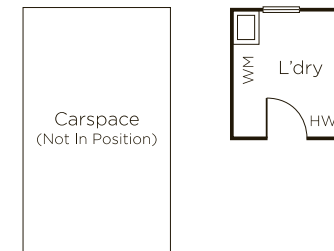
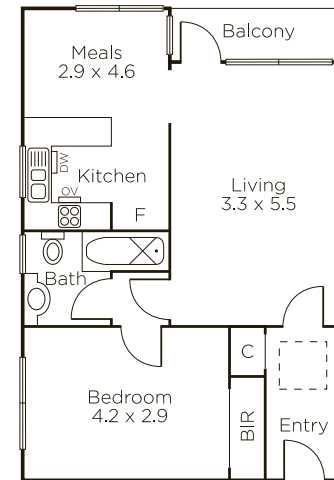
James Hill 0402 421 154

Ash Sachdev 0402 425 661

Samantha Paterson 0417 137 721

801 Glenferrie Road Hawthorn

9822 9999 mwone.com.au



  
**MARSHALLWHITE**  
**ONE**

Disclaimer: Information provided is believed to be accurate as at the date of printing, no responsibility is taken for any errors or omissions. It is your responsibility to obtain independent, professional advice. Personal information collected from you is for security purposes to contact you should the property sell prior to auction. We may use this information to provide you with other real estate services including referrals to authorized financial services providers. Visit our website at [www.mwone.com.au](http://www.mwone.com.au) for our privacy policy.