



MARSHALLWHITE

75 Normanby Road
Caulfield North



The Timeless Appeal of a True Classic

Set behind a high walled garden, this captivating Victorian residence's impressive blend of evocative period elegance and modern comfort provides a wonderful family environment close to Caulfield Park, Malvern station, schools and Glenferrie Rd shops. A wide arched hallway introduces a beautiful sitting room (open fire), main bedroom with open fire, walk in robe and ensuite, three additional bedrooms and bathroom. The superbly proportioned living/dining room and modern granite kitchen opens to a good sized private garden. Includes new plantation shutters, hydronic heating, large laundry, irrigation and double carport via rear lane. Land size: 503sqm (approx.)

75normanbyroad-caulfieldnorth.com

4 2 2

Auction Saturday 12th August at 10am

Madeline Kennedy 0411 873 913

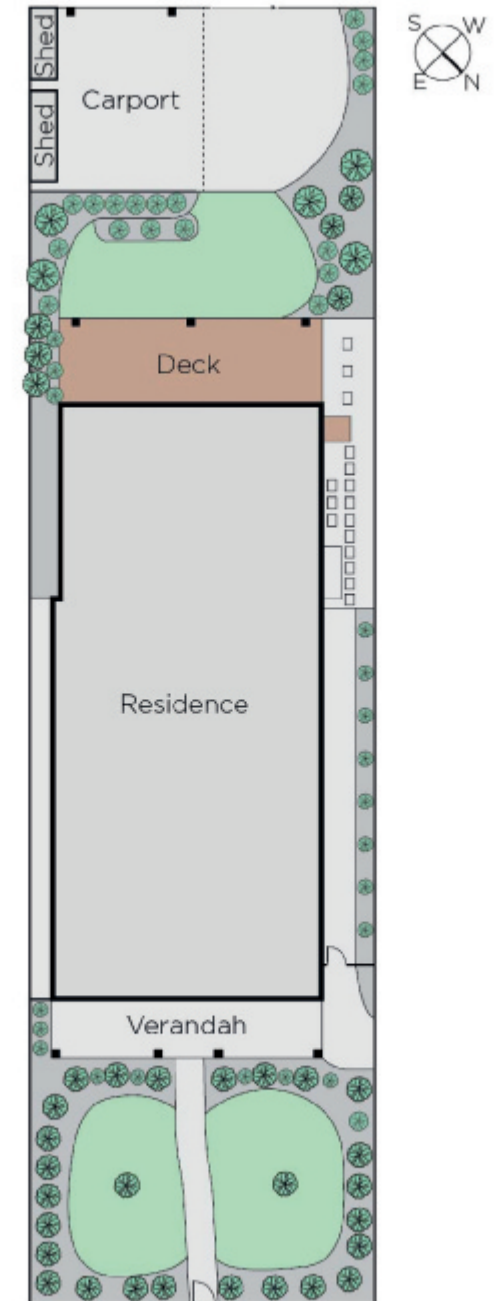
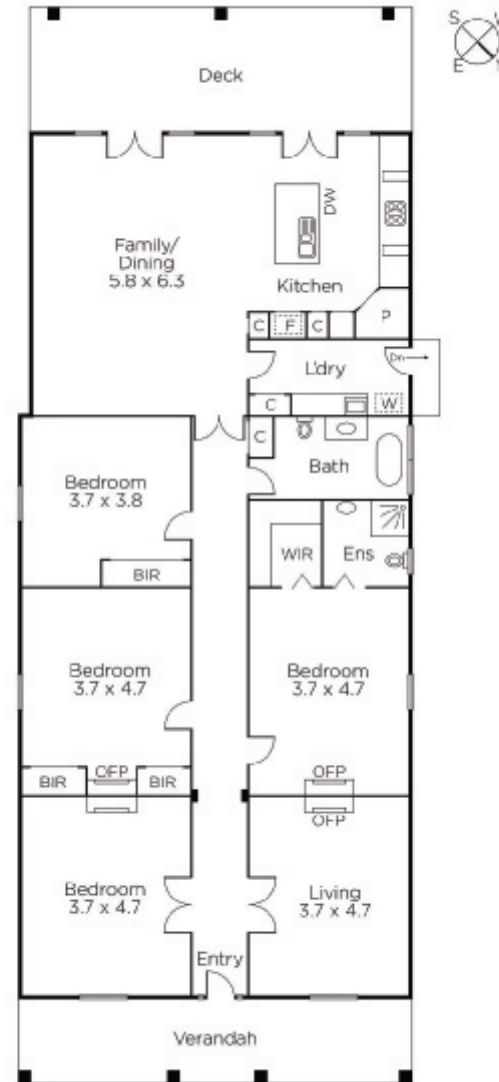
Fiona Ansell-Jones 0410 325 240

Hamish Tostevin 0408 004 766

1111 High Street Armadale

marshallwhite.com.au


MARSHALLWHITE



Disclaimer: Information provided is believed to be accurate as at the date of printing, no responsibility is taken for any errors or omissions. It is your responsibility to obtain independent, professional advice. Personal information collected from you is for security purposes and to contact you should the property sell prior to auction. We may use this information to provide you with other real estate services including referrals to authorised financial services' providers. Visit our website at www.marshallwhite.com.au for our privacy policy.