




MARSHALLWHITE
ONE

7/48 Oxley Road
Hawthorn



Breathtaking Proportions and Designer Sensibility

As it creates a new benchmark for inspired, loft-style inner-urban apartment dwelling, this incredibly spacious, three bedroom plus study conversion was once a part of an historical school and now exudes a grand, New York sense of proportion, certain to inspire awe. Architecturally renovated to the most exacting standards with vaulted ceilings, black stone waterfall benches, a feature-tiled splash back and volumes of soft-close Flume cabinetry, the SMEG and Miele equipped kitchen and open-plan dining/living flow through huge concertina doors to a private, sundrenched, deck. Also features a mezzanine study, an ensuite, master bedroom with twin built-in robes and captivating city views, as well as a huge store room, secure intercom entry, two undercover parking spaces, central heating and cooling and communal tennis court. A quiet streetscape combines its leafy tranquillity with an alluring proximity to all Glenferrie Rd attractions, city-bound trains and trams.

7-48oxleyroad-hawthorn.com

3 2 2

Auction Saturday 12th October at 3pm

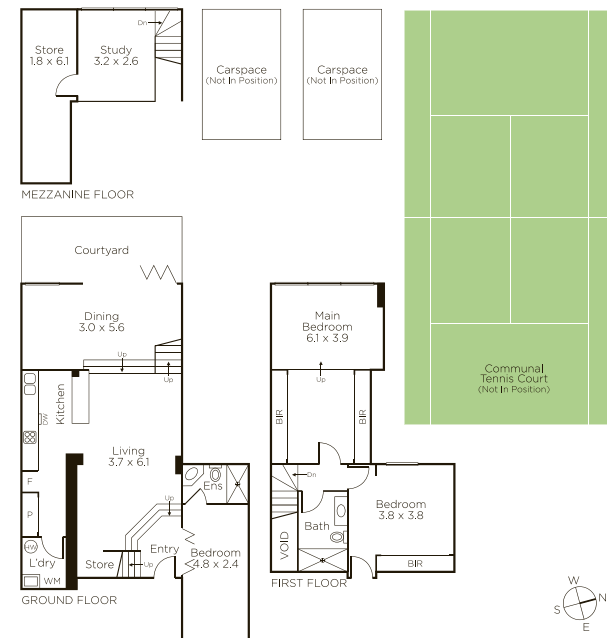
Ash Sachdev 0402 425 661

Shamit Verma 0401 137 597

James Hill 0402 421 154

801 Glenferrie Road Hawthorn

9822 9999 mwone.com.au



MARSHALLWHITE
ONE

Disclaimer: Information provided is believed to be accurate as at the date of printing, no responsibility is taken for any errors or omissions. It is your responsibility to obtain independent, professional advice. Personal information collected from you is for security purposes to contact you should the property sell prior to auction. We may use this information to provide you with other real estate services including referrals to authorized financial services providers. Visit our website at www.mwone.com.au for our privacy policy.