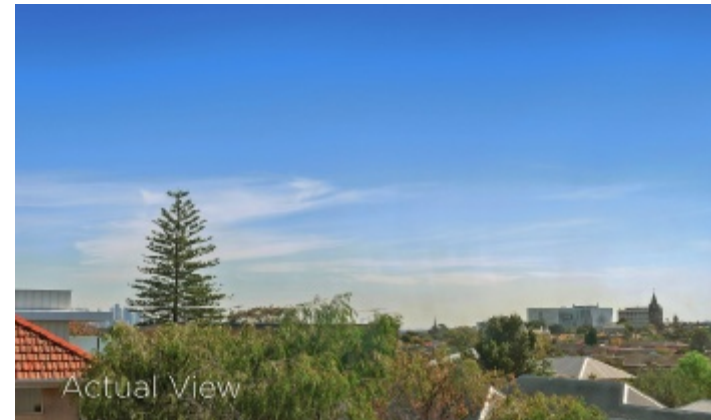




  
MARSHALLWHITE  
ONE

7/317 Riversdale Road  
Hawthorn East



## Size, Substance and City Views

Distinguished by commanding views that include the city skyline, this spacious top floor apartment is a two bedroom home with superior investment or first home credentials. Tastefully refurbished, filled with natural light and requiring no maintenance, the home is perfectly positioned for easy access to both Camberwell Junction and the city, for the most dynamic of urban lifestyles. With new carpets and freshly painted; the modern kitchen/meals area and bright lounge/dining room enjoy terrific views. The home also features rear parking that is accessed via Loch St, plus secure intercom entry, generous bedrooms with built-in robes, great storage and a bathroom/laundry that is separate to the WC. Just moments from all the cafes, restaurants, shops, city-bound transport and Rivoli Cinema at Camberwell Junction, the home is also convenient to Swinburne University, Tooronga Village Shopping Centre and the M1 Freeway.

7-317riversdaleroad-hawthorneast.com 2 1 1

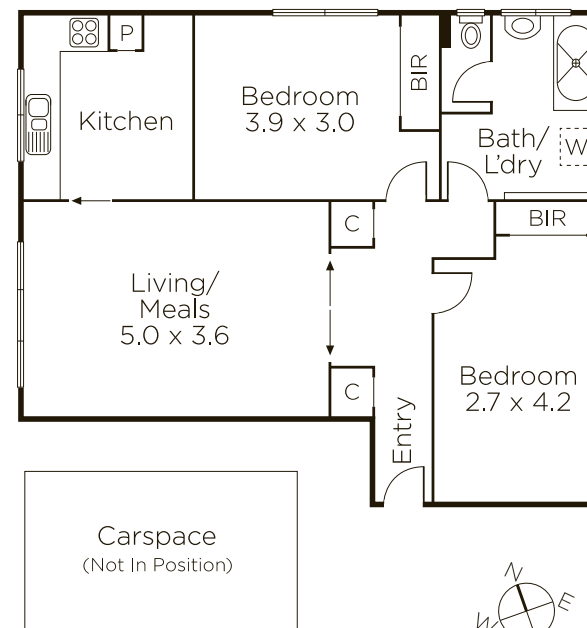
Auction Saturday 19th May at 10am

Danny See 0402 533 853

Dean Tuckey 0423 084 578

801 Glenferrie Road Hawthorn

9822 9999 mwone.com.au



Disclaimer: Information provided is believed to be accurate as at the date of printing, no responsibility is taken for any errors or omissions. It is your responsibility to obtain independent, professional advice. Personal information collected from you is for security purposes to contact you should the property sell prior to auction. We may use this information to provide you with other real estate services including referrals to authorized financial services providers. Visit our website at [www.mwone.com.au](http://www.mwone.com.au) for our privacy policy.