




MARSHALLWHITE

7/2 Cromwell Road
South Yarra



Contemporary Style, Courtyard Lifestyle

The impressive lifestyle appeal of this ground level boutique residence's sophisticated indoor & outdoor dimensions is further enhanced by a prized location between Hawksburn Village & Chapel St. Brilliantly designed & impeccably detailed, the generous living & dining room featuring limed oak floors, a study nook & sleek Miele marble kitchen opens to a private west-facing BBQ courtyard. The main bedroom with designer ENS & built in robe is accompanied by a 2nd bedroom with built in robe & a stylish bathroom. Includes video intercom, Euro-laundry, storage & basement double car-parking.

7-2cromwellroad-southyarra.com

2 2 2

Auction Saturday 15th July at 1.30pm

James McCormack 0410 503 389

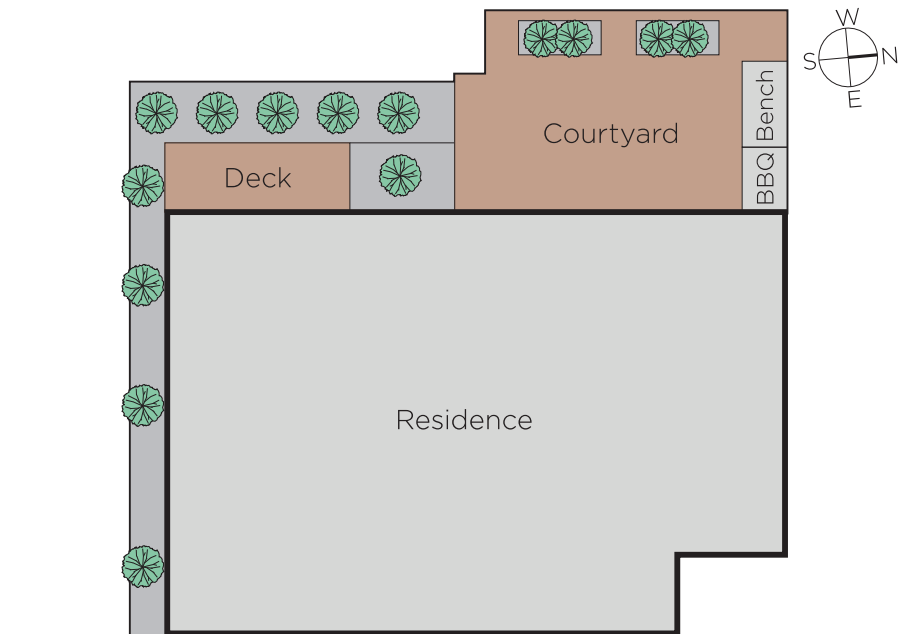
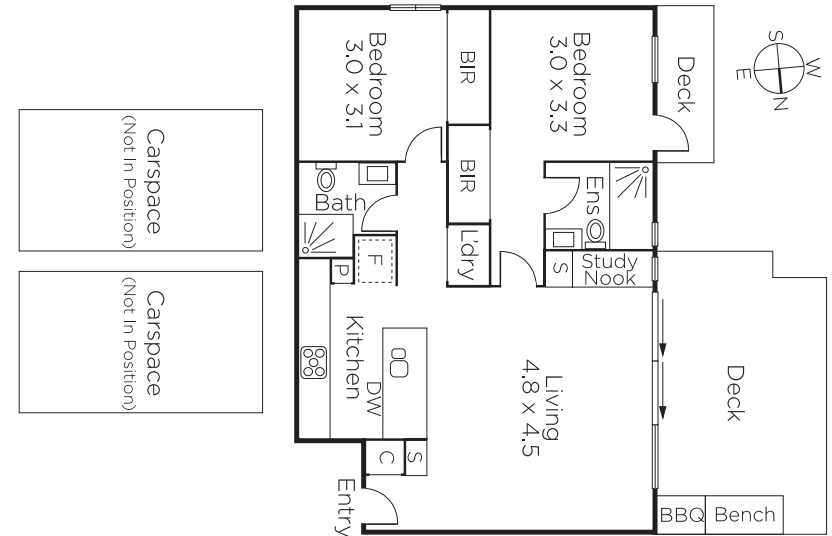
Vanessa Pleasance 0413 801 151

Dean Gilbert 0418 994 939

1111 High Street Armadale

marshallwhite.com.au


MARSHALLWHITE



Disclaimer: Information provided is believed to be accurate as at the date of printing, no responsibility is taken for any errors or omissions. It is your responsibility to obtain independent, professional advice. Personal information collected from you is for security purposes and to contact you should the property sell prior to auction. We may use this information to provide you with other real estate services including referrals to authorised financial services' providers. Visit our website at www.marshallwhite.com.au for our privacy policy.