




MARSHALLWHITE
ONE

7/14 The Boulevard
Hawthorn



Capitalise on your Investment

Privately situated at the rear of an older-style complex this first floor apartment offers an outstanding opportunity for first home buyers, young couples or shrewd investors seeking entry into the Hawthorn market; with its value and future appreciation prospects underpinned by its excellent location in a quiet tree lined street in the highly regarded Urquhart Estate precinct. Close to Swinburne University, Auburn Village or Glenferrie Road shopping, cafes and restaurants, parklands and transport. The light and bright interior features polished timber floors through a living and dining room combined with an electric wall heater, two good-sized bedrooms (BIRs), an updated kitchen with S/S stove and adjoining study, a laundry alcove and pristine bathroom. Other features include scope for further cosmetic improvements if desired, secure intercom entry with auto gates and off street parking.

7-14theboulevard-hawthorn.com

2 1 1

Auction Saturday 6th April at 12pm

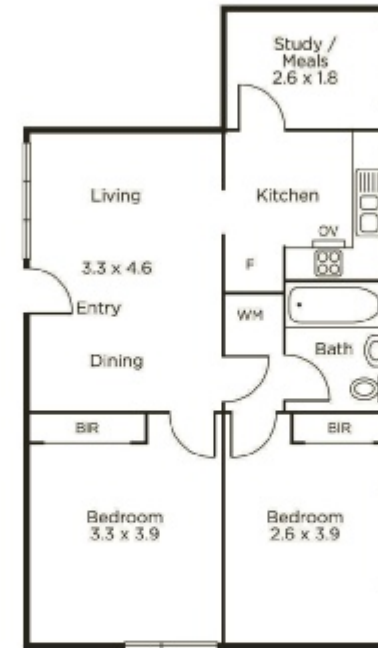
Kane Penhalluriack 0406 556 445

Danny See 0402 533 853

Damian O'Sullivan 0418 566 916

801 Glenferrie Road Hawthorn

9822 9999 mwone.com.au



Carspace
(Not In Position)



MARSHALLWHITE
ONE

Disclaimer: Information provided is believed to be accurate as at the date of printing, no responsibility is taken for any errors or omissions. It is your responsibility to obtain independent, professional advice. Personal information collected from you is for security purposes to contact you should the property sell prior to auction. We may use this information to provide you with other real estate services including referrals to authorized financial services providers. Visit our website at www.mwone.com.au for our privacy policy.