




MARSHALLWHITE

7/12 Barlow Street
Port Melbourne



Secure, Sophisticated, Single-Level

Generous proportions include two inviting bedrooms, the main with semi-ensuite access to a spa bathroom, a light filled living and dining incorporating a contemporary kitchen with Bosch appliances before opening through French doors to a paved and private rear courtyard. A home that leaves a lasting impression in a brilliant location also close to the bay, Port Melbourne Yacht Club, Port Melbourne Primary and Albert Park College. Attic storage, Ducted gas heating, FUJITSU split system heating/cooling, automated watering system and pretty established gardens.

7-12barlowstreet-portmelbourne.com

2 1

Auction Saturday 8th April at 12.30pm

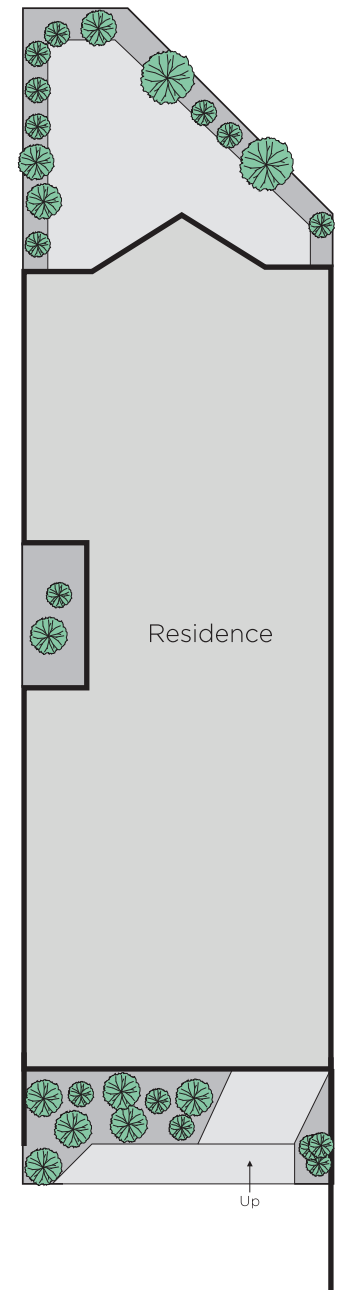
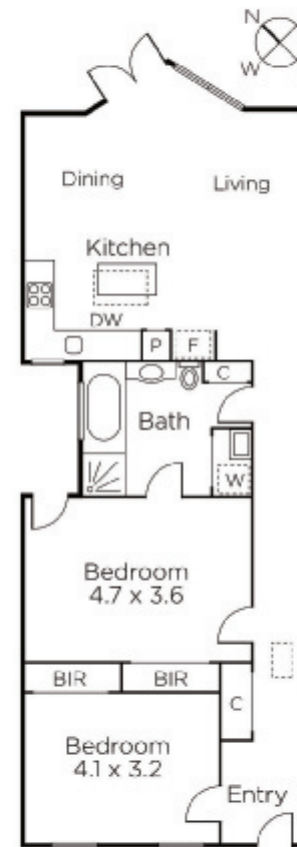
Sam Hobbs 0404 164 444

Daniel McGuire 0411 514 103

Michael Paproth 0488 300 800

101 Dundas Place Albert Park
marshallwhite.com.au


MARSHALLWHITE



Disclaimer: Information provided is believed to be accurate as at the date of printing, no responsibility is taken for any errors or omissions. It is your responsibility to obtain independent, professional advice. Personal information collected from you is for security purposes and to contact you should the property sell prior to auction. We may use this information to provide you with other real estate services including referrals to authorised financial services' providers. Visit our website at www.marshallwhite.com.au for our privacy policy.