



  
MARSHALLWHITE  
ONE  
7/10-12 Lysterville Avenue  
Malvern



## Flawlessly Renovated, Vogue and North-facing

Superbly renovated, this visually striking and well-proportioned, two bedroom villa is one of only nine, nestled between the delightful open spaces of Central Park and the cosmopolitan hum of Glenferrie Rd. A galley-style kitchen with broad stone-topped benches reveals a comprehensive suite of the very finest Ilve appliances and a black, under-mount Schock sink, as it overlooks a vast open-plan meals / living in which volumes of two-pack cabinetry is particularly attractive and marvelously functional. Accessed securely - and keylessly - the home also features built-in robes and plush carpets in the bedrooms, a vogue bathroom, stone-topped laundry, paved rear courtyard, split system heating / cooling and a convenient front carport. An enjoyable stroll sees you in the heart of Glenferrie Rd's cafe and restaurant strip or Malvern Central Shopping Centre, plus there is plenty of city-bound public transport to be found.

7-10lystervilleavenue-malvern.com

2 1 1

Auction Saturday 30th November at 10.30am

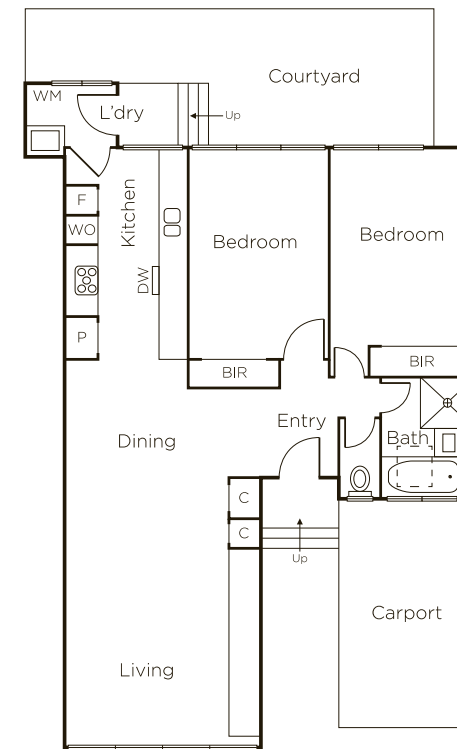
Joseph Ben-Danan 0408 135 948

Gareth MacLeod 0409 920 553

Dean Gilbert 0418 994 939

1111 High Street Armadale

9822 9999 [mwone.com.au](http://mwone.com.au)



**MARSHALLWHITE**  
**ONE**

Disclaimer: Information provided is believed to be accurate as at the date of printing, no responsibility is taken for any errors or omissions. It is your responsibility to obtain independent, professional advice. Personal information collected from you is for security purposes to contact you should the property sell prior to auction. We may use this information to provide you with other real estate services including referrals to authorized financial services providers. Visit our website at [www.mwone.com.au](http://www.mwone.com.au) for our privacy policy.