



71



MARSHALLWHITE

71 Canterbury Road
Middle Park



Memorable Victorian with Self Contained Studio

This distinctive and distinguished residence offers a memorable family environment in an iconic location just moments from Middle Park Village. Introduced by a compelling facade, a series of sophisticated living and dining domains include formal lounge with open fireplace, an expansive living/dining domain and a well-appointed granite kitchen. Three beautiful bedrooms include an inviting main with ensuite, complemented by a fully self-contained apartment of exceptional size. Lush, landscaped gardens and a covered entertaining area. Second street frontage to Canterbury Place with 3-car garage. 508 sqm approx

71canterburyroad-middlepark.com

4 3 3

Auction Saturday 28th October at 2.30pm

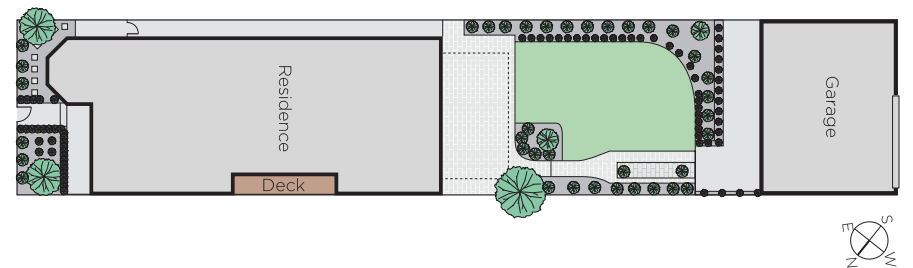
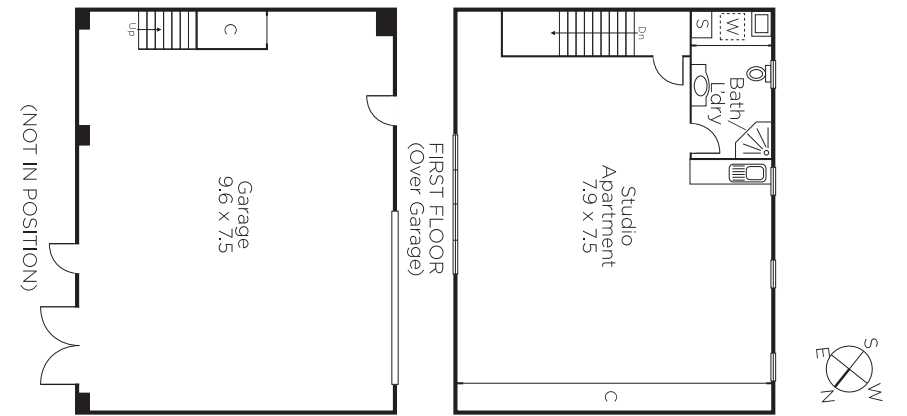
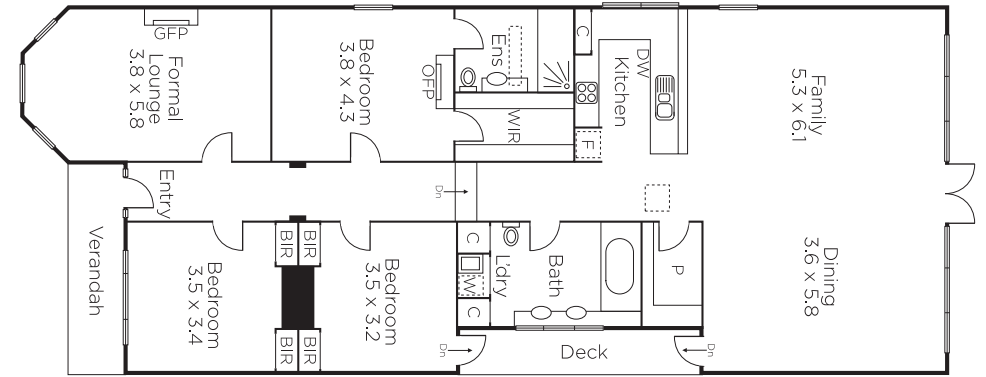
Adrian Wood 0404 861 508

Sarah Carey 0420 246 200

Damian O'Sullivan 0418 566 916

101 Dundas Place Albert Park
marshallwhite.com.au


MARSHALLWHITE



Disclaimer: Information provided is believed to be accurate as at the date of printing, no responsibility is taken for any errors or omissions. It is your responsibility to obtain independent, professional advice. Personal information collected from you is for security purposes and to contact you should the property sell prior to auction. We may use this information to provide you with other real estate services including referrals to authorised financial services' providers. Visit our website at www.marshallwhite.com.au for our privacy policy.