




MARSHALLWHITE

7 Wiltshire Street
Richmond



Inspired Inner Urban Style

Architecturally inspired, this sensational 3-level residence's ultra stylish dimensions provide an enviable "New York" lifestyle near Swan St and Church Street's restaurants and shops and just minutes from the MCG and city. Exposed Besser brick walls and timber floors define the light-filled living/dining room with a sleek kitchen opening to a north balcony. On the level above, a spacious living room extends out to a large north terrace offering city views. On each of the three levels there is a double bedroom with stylish bathroom. Includes video intercom, laundry, storage, remote blinds, sun awning and 3 car garaging.

7wiltshirestreet-richmond.com

3 3 3

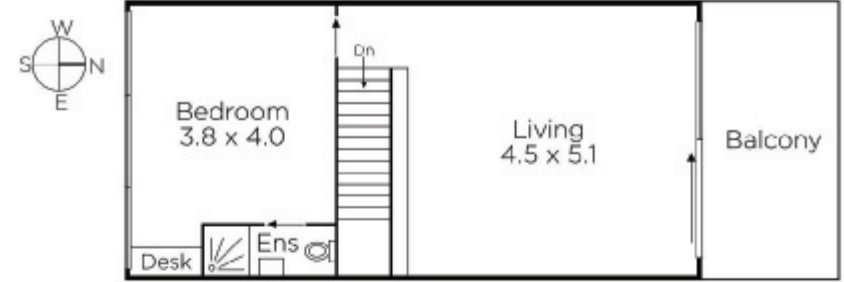
Auction Saturday 17th June at 10.30am

David Volpato 0414 701 983

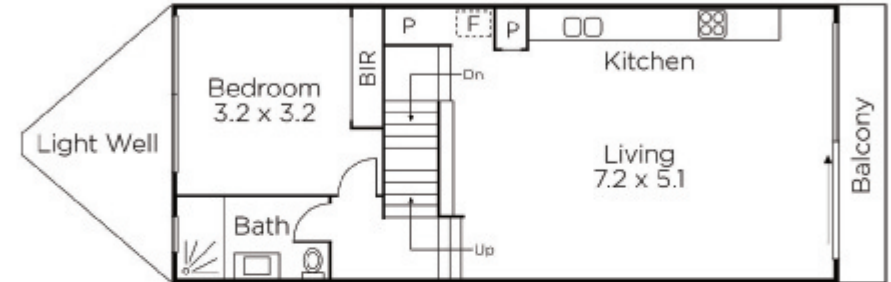
James Redfern 0412 360 667

1111 High Street Armadale
marshallwhite.com.au

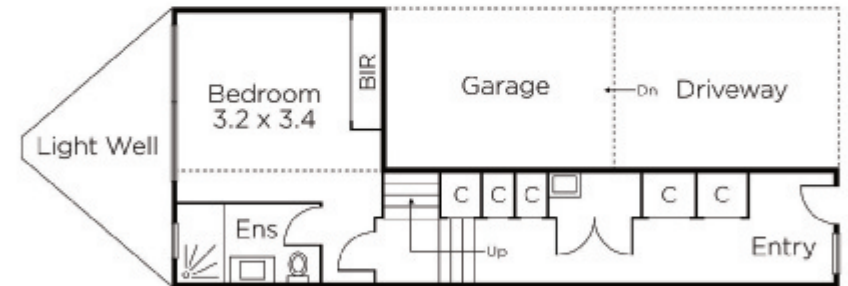

MARSHALLWHITE



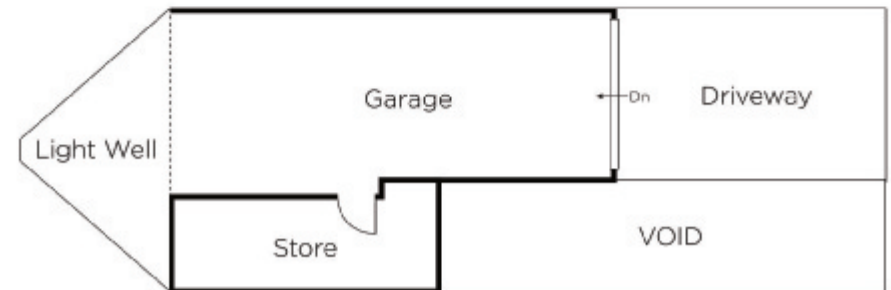
SECOND FLOOR



FIRST FLOOR



GROUND FLOOR



LOWER GROUND FLOOR

Disclaimer: Information provided is believed to be accurate as at the date of printing, no responsibility is taken for any errors or omissions. It is your responsibility to obtain independent, professional advice. Personal information collected from you is for security purposes and to contact you should the property sell prior to auction. We may use this information to provide you with other real estate services including referrals to authorised financial services' providers. Visit our website at www.marshallwhite.com.au for our privacy policy.