



503sqm
(approx.)


MARSHALLWHITE

7 Nyora Street
Malvern East





Brilliant Opportunity Between the Parks

With Hedgeley Dene at one end of the cul de sac and Central Park at the other, a more idyllic setting for a dream home would be hard to find. Impeccably presented throughout, this classic eighties brick residence provides the ideal foundation for an inspired renovation or alternatively its deep north-facing allotment with a second frontage on Knox St is the perfect site to build a new home to your own requirements (STCA). The Oregon timber lined vaulted ceiling accentuates the spectacular scale of the 22m approx. long living and entertaining room served by an immaculate well appointed kitchen. Surrounded by glass, the living area opens out to a private north-facing garden with access to Knox St. The main bedroom with ensuite and walk in robe and a second double bedroom with built in robe and ensuite/bathroom are downstairs while a large 3rd bedroom or retreat is upstairs. Walking distance to Central Park Village, schools and Wattleree Rd trams and Darling Station, it also includes a laundry, storage and double garage. Land size: 503sqm approx.

7nyorastreet-malverneast.com

3  2  2 

Auction Saturday 3rd June at 11.30am

Daniel Wheeler 0411 676 058

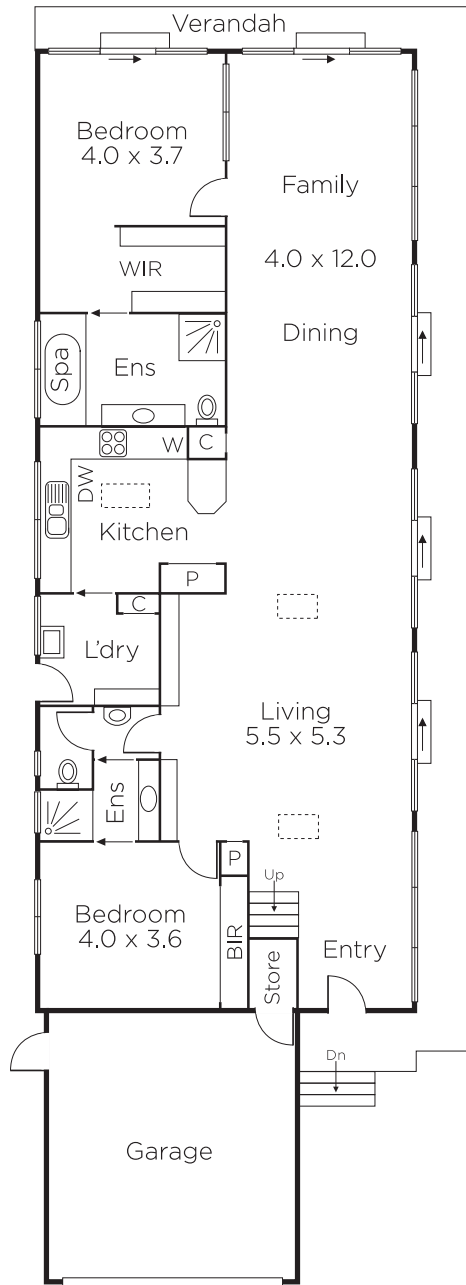
Justin Krongold 0403 163 355

Clare Moloney 0401 546 441

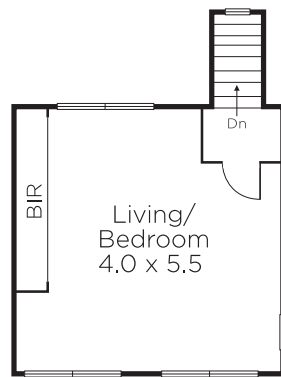
1111 High Street Armadale

marshallwhite.com.au

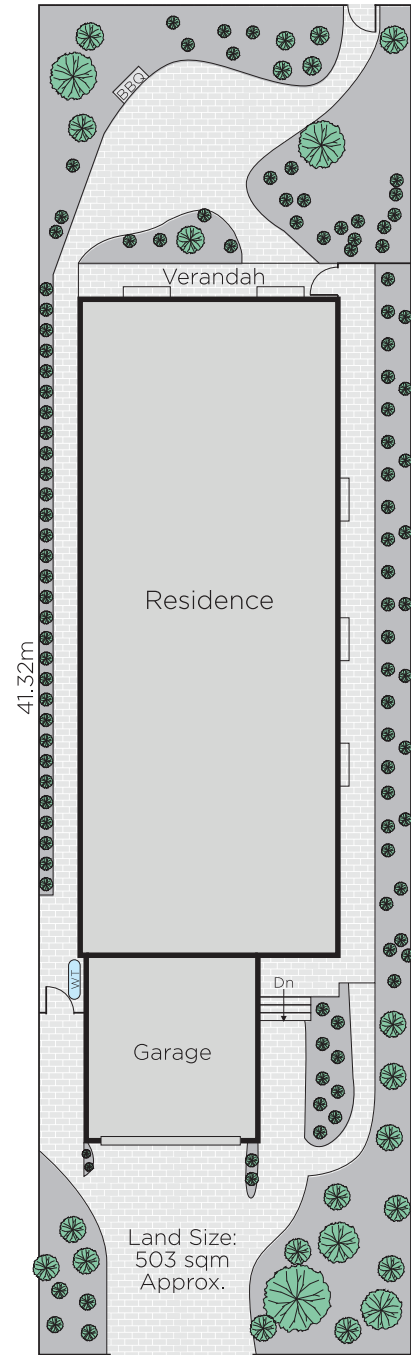

MARSHALLWHITE



GROUND FLOOR



FIRST FLOOR



Disclaimer: Information provided is believed to be accurate as at the date of printing, no responsibility is taken for any errors or omissions. It is your responsibility to obtain independent, professional advice. Personal information collected from you is for security purposes and to contact you should the property sell prior to auction. We may use this information to provide you with other real estate services including referrals to authorised financial services' providers. Visit our website at www.marshallwhite.com.au for our privacy policy.