




MARSHALLWHITE

7 Monaro Close
Kooyong



Prime Location, Perfect Opportunity

Perfectly situated in a tightly held cul de sac, the dimensions of this elegant single level residence are ideal to enjoy now while presenting exciting opportunities to renovate, extend or to rebuild within a broad northeast private garden setting (STCA). Natural light streams through the wide entrance hall and generous lounge room. The superbly proportioned formal living/dining room with open fireplace and dual aspect opens to the picturesque private back garden. Desirably situated within the heart of Kooyong, walking distance to Kooyong station, shops, tennis club, local parks, and Melbourne's best schools. Land size: 670sqm (approx.)

7monaroclose-kooyong.com

3 1 2

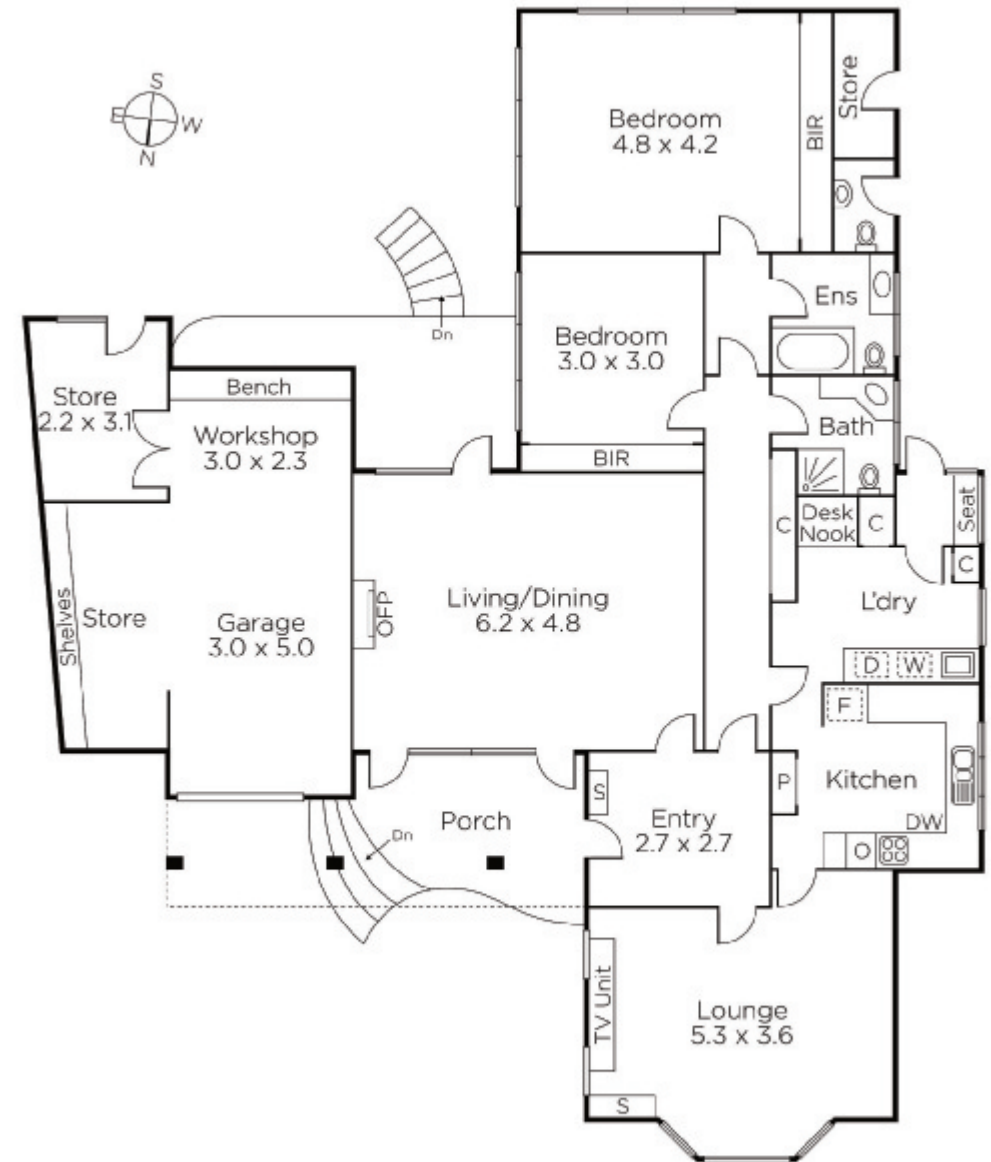
Auction Saturday 17th June at 11.30am

Andrew Hayne 0418 395 349

Fiona Ansell-Jones 0410 325 240

1111 High Street Armadale
marshallwhite.com.au


MARSHALLWHITE



Disclaimer: Information provided is believed to be accurate as at the date of printing, no responsibility is taken for any errors or omissions. It is your responsibility to obtain independent, professional advice. Personal information collected from you is for security purposes and to contact you should the property sell prior to auction. We may use this information to provide you with other real estate services including referrals to authorised financial services' providers. Visit our website at www.marshallwhite.com.au for our privacy policy.