



MARSHALLWHITE

7 Grace Street
Mont Albert



Impeccable Family Credentials

Impressively matching stunning interior dimensions with beautiful outdoor environs, this brilliantly designed contemporary residence responds to every modern family requirement near fine schools, Mont Albert station, shops & trams. The wide hall introduces a lounge (gas fire), study, expansive family/meals premium kitchen opening to the deep garden. Exceptional proportions continue through the main bedroom (designer en-suite/robes), three spacious bedrooms (robes), bathroom & retreat. Includes alarm, ducted vacuum, powder-room, laundry, irrigation, water tank & double garage. Land size: 636sqm approx.

7gracestreet-montalbert.com

4 2 2

Auction Saturday 29th April at 12.30pm

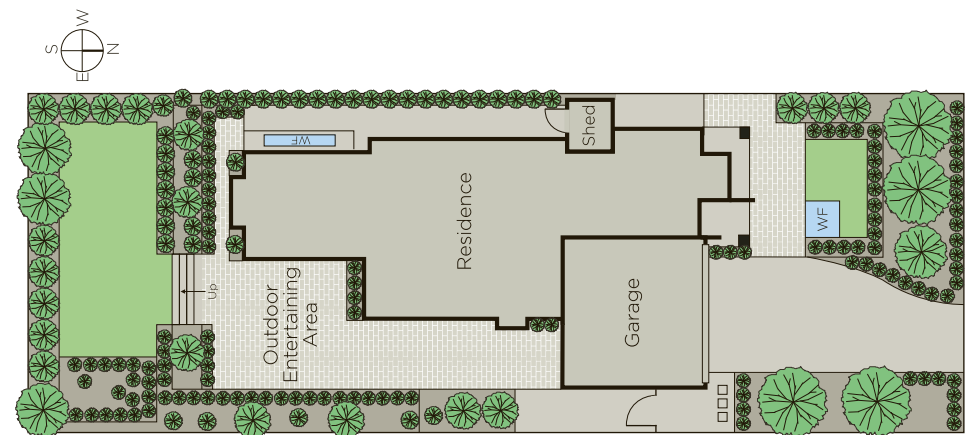
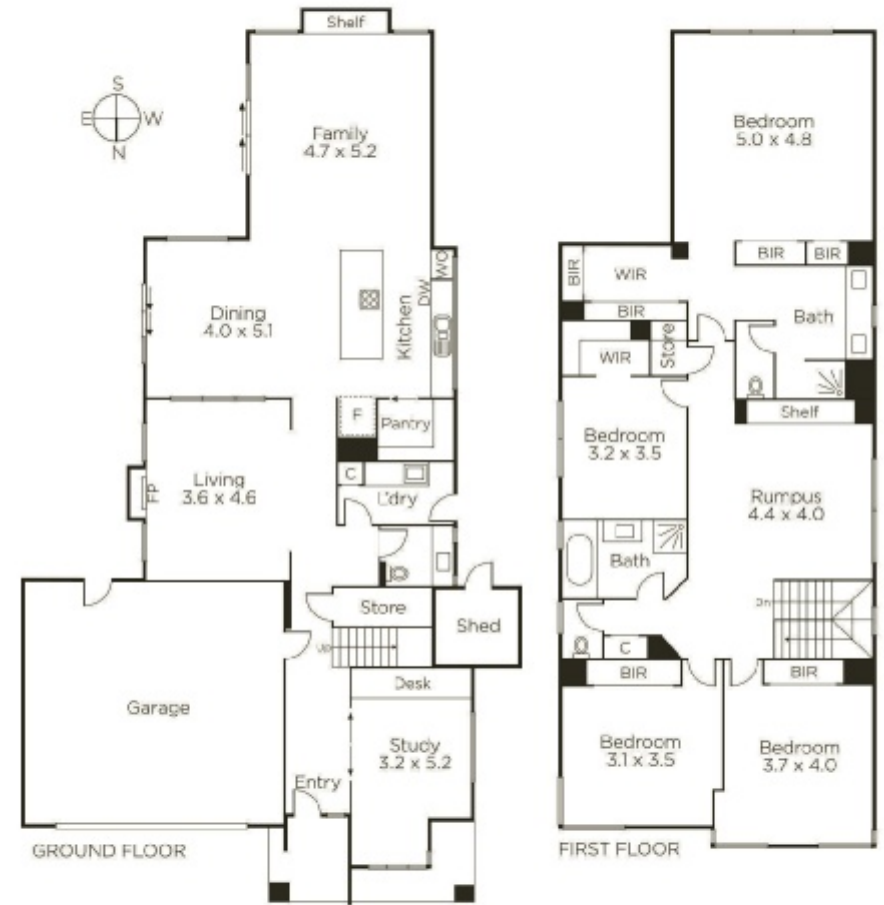
Robert Ding 0418 858 393

Lucy Jiang 0434 288 212

Anton Zhouk 0430 224 438

801 Glenferrie Road Hawthorn
marshallwhite.com.au

MARSHALLWHITE



Disclaimer: Information provided is believed to be accurate as at the date of printing, no responsibility is taken for any errors or omissions. It is your responsibility to obtain independent, professional advice. Personal information collected from you is for security purposes and to contact you should the property sell prior to auction. We may use this information to provide you with other real estate services including referrals to authorised financial services' providers. Visit our website at www.marshallwhite.com.au for our privacy policy.