



688


MARSHALLWHITE

688 High Street
Prahan



Exquisite Period Home in Premier Location

Showcasing heritage charm and an abundance of natural light, this address delivers an incomparable urban lifestyle. Introduced by a light-filled entrance hallway, a delightful living space combines with a formal dining room complete with fireplace and courtyard setting to create a variety of year-round entertaining options. A well-equipped kitchen offers a picturesque outlook onto the lush foliage of a second courtyard. Two bedrooms comprise extensive walk-in robes and fireplaces and share a central bathroom. Further features include a range of period details, study, laundry, additional bathroom and off-street parking.

688highstreet-prahran.com

3 2 2

Auction Saturday 9th September at 10.30am

Dean Gilbert 0418 994 939

James McCormack 0410 503 389

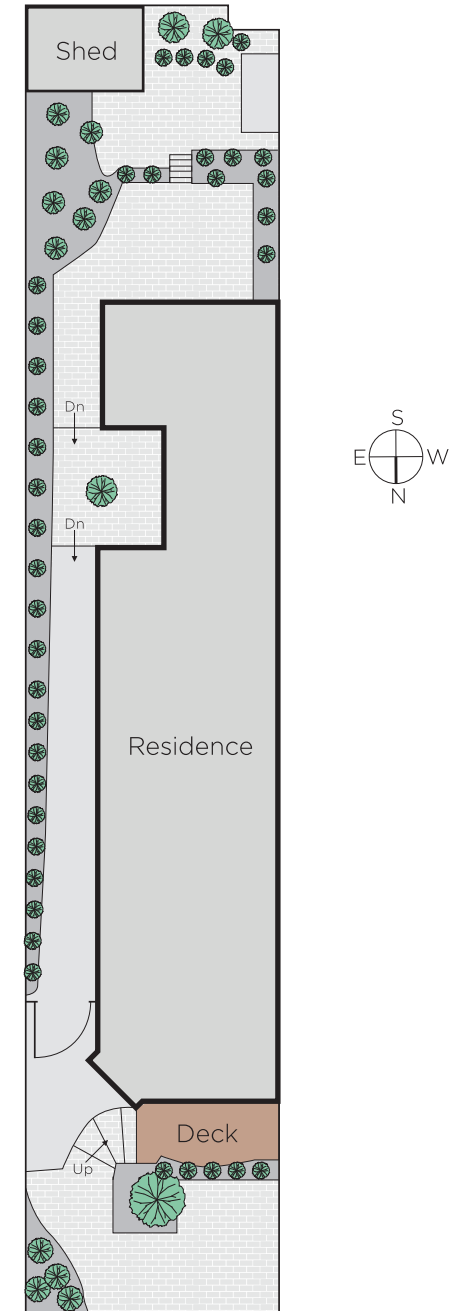
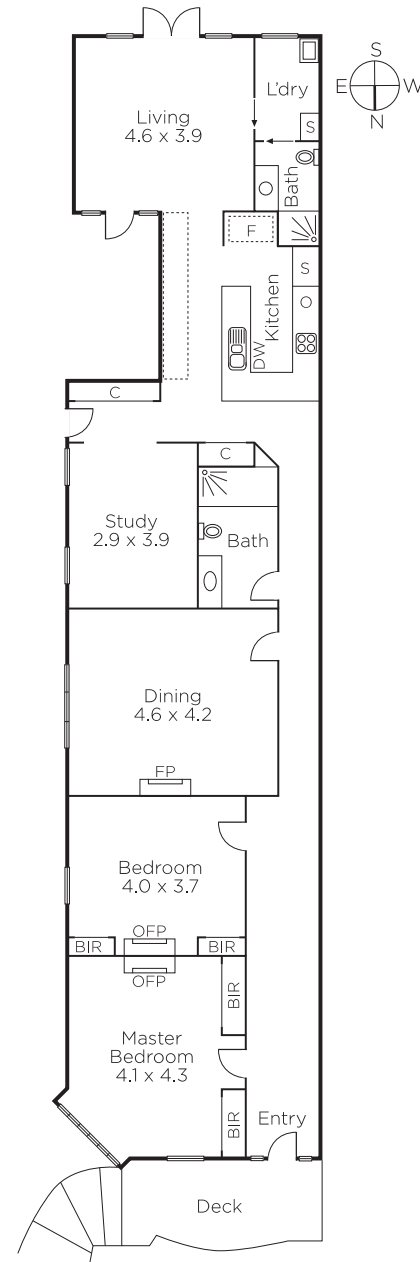
Vanessa Pleasance 0413 801 151

1111 High Street Armadale

marshallwhite.com.au



MARSHALLWHITE



Disclaimer: Information provided is believed to be accurate as at the date of printing, no responsibility is taken for any errors or omissions. It is your responsibility to obtain independent, professional advice. Personal information collected from you is for security purposes and to contact you should the property sell prior to auction. We may use this information to provide you with other real estate services including referrals to authorised financial services' providers. Visit our website at www.marshallwhite.com.au for our privacy policy.