



68



MARSHALLWHITE

68 Nungerner Street  
Balwyn





## Charm and Character Meets Comfort and Convenience

A sympathetically extended and impeccably maintained 1940's clinker brick veneer single storey house, in which charming formal living and dining rooms with subtle original art-deco features are complemented by a beautifully appointed modern kitchen adjacent to an expansive family room incorporating an informal dining area and opening to a private and sunny north and westerly oriented rear garden. A thoughtfully zoned floor plan offers four spacious double bedrooms, two bathrooms and a modern laundry and is complemented by a substantial double carport and a single garage. Ideally situated on a 645sqm (approx.) garden allotment in a quiet street of quality homes, just 100m from several bus services (including a direct City service) on Belmore Road, the property enjoys close proximity to extensive parklands and recreational facilities in Myrtle and Macleay Parks and is within easy reach of an abundance of fine schooling, including the highly regarded Balwyn High School.

[68nungernerstreet-balwyn.com](http://68nungernerstreet-balwyn.com)

4  2  3 

Auction Saturday 19th May at 1.30pm

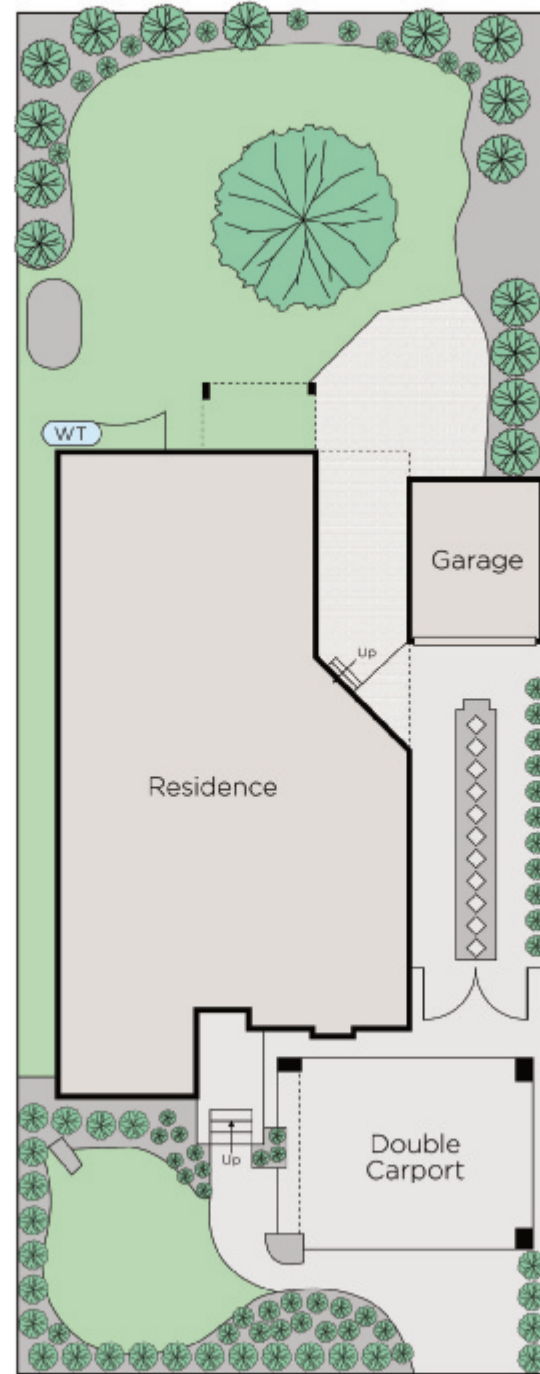
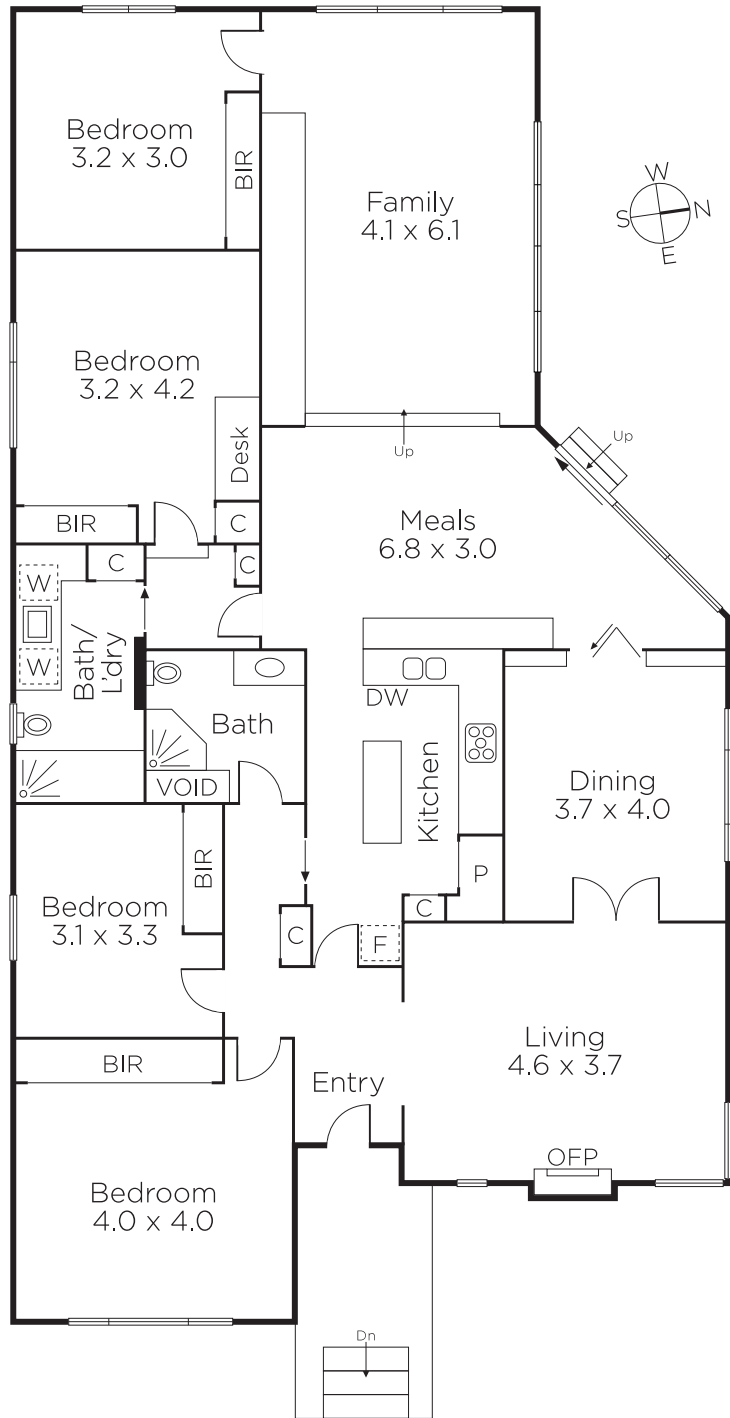
**Samara Bella-Coulson**  
0488 111 915

**Doug McLauchlan**  
0418 377 718

**Stephen Gough**  
0439 844 855

  
MARSHALLWHITE

801 Glenferrie Road, Hawthorn



Disclaimer: Information provided is believed to be accurate as at the date of printing, no responsibility is taken for any errors or omissions. It is your responsibility to obtain independent, professional advice. Personal information collected from you is for security purposes and to contact you should the property sell prior to auction. We may use this information to provide you with other real estate services including referrals to authorised financial services' providers. Visit our website at [www.marshallwhite.com.au](http://www.marshallwhite.com.au) for our privacy policy.