




MARSHALLWHITE
ONE

6/71 Robinson Road
Hawthorn



Light and Spacious Townhouse on Scotch Hill

This private, sunny and peaceful, three bedroom single level townhouse is beautifully positioned at the rear of a superbly maintained block of only six, in an enviable Scotch Hill position. Thoughtfully designed, this generous 118 sq metre home flows from an informal kitchen/meals area opening to an east and north facing, paved, rear courtyard, and to a dining area and lounge room. The bedrooms are all well-removed from living - the master with ensuite and double built-in robes and the other bedrooms also with built-in robes, whilst additional features include secure entry with intercom, a double garage, laundry, 2nd bathroom with separate WC, plus ducted heating, cooling and an easy-care garden with rainwater tank. Walk to Auburn Road cafés, city bound trams and Gardiners Creek parkland, while Camberwell Junction, Tooronga Village Shopping Centre, Auburn Secondary College and a stunning selection of elite private schools are nearby.

6-7robinsonroad-hawthorn.com

3 2 2

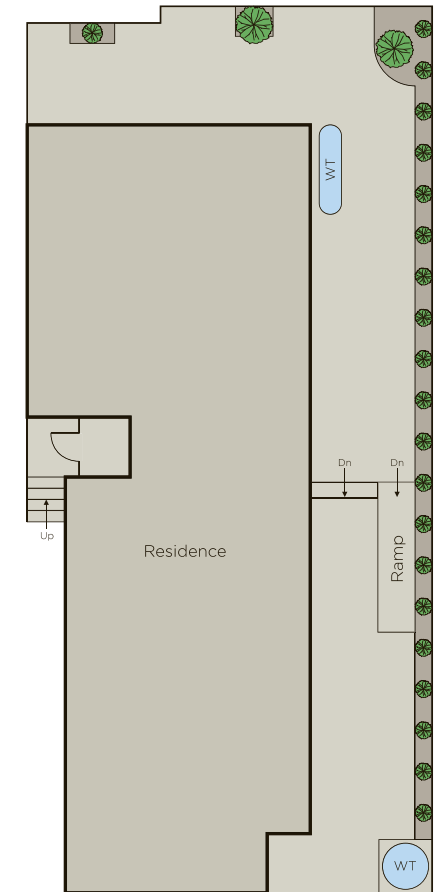
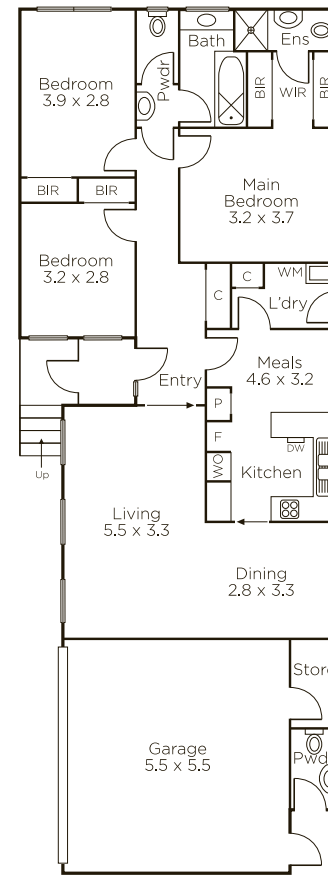
Auction Saturday 21st September at 10am

James Hill 0402 421 154

Samantha Paterson 0417 137 721

801 Glenferrie Road Hawthorn

9822 9999 mwone.com.au



MARSHALLWHITE ONE

Disclaimer: Information provided is believed to be accurate as at the date of printing, no responsibility is taken for any errors or omissions. It is your responsibility to obtain independent, professional advice. Personal information collected from you is for security purposes to contact you should the property sell prior to auction. We may use this information to provide you with other real estate services including referrals to authorized financial services providers. Visit our website at www.mwone.com.au for our privacy policy.