




MARSHALLWHITE

67 South Road
Brighton



Family Space and Character Close to the Bay

Love the location, character and spaciousness of this fine home, near the beach and many schools. Renovated and extended, 4 living areas are fantastic for family zoning, 4 bedrooms include an upstairs parents' retreat, and there's the option of a study/dining room. Enjoy the north-facing family room and kitchen for their space and garden views. Great care has gone into retaining original Art Deco features and introducing contemporary quality. Sun-filled outdoor spaces, undercover pergola, potential right of way, and generous setback. Impressive location with the beach, Were St shops and railway station blocks away.

67southroad-brighton.com

4 2 2

Auction Saturday 25th November at 11.30am

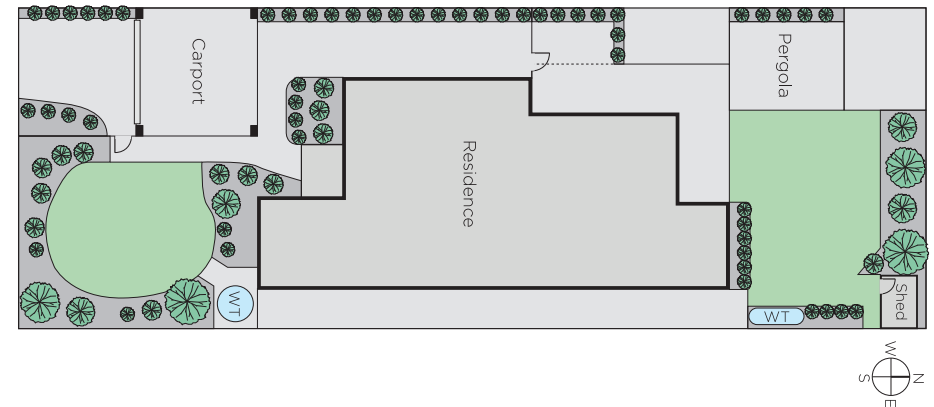
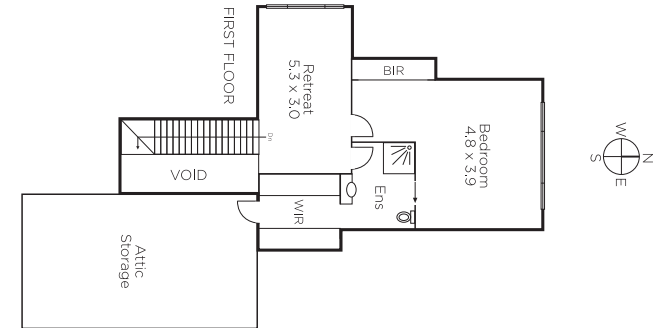
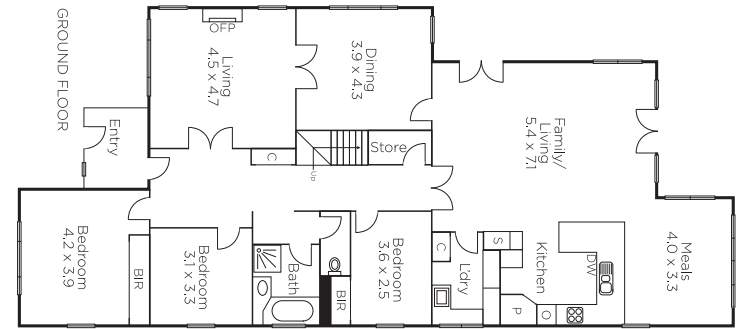
Barb Gregory 0419 568 370

Alyce Fleming 0499 082 614

Myles Howell 0413 100 700

225 Bay Street Brighton
marshallwhite.com.au


MARSHALLWHITE



Disclaimer: Information provided is believed to be accurate as at the date of printing, no responsibility is taken for any errors or omissions. It is your responsibility to obtain independent, professional advice. Personal information collected from you is for security purposes and to contact you should the property sell prior to auction. We may use this information to provide you with other real estate services including referrals to authorised financial services' providers. Visit our website at www.marshallwhite.com.au for our privacy policy.